

# 2024 Green Infrastructure Upgrades

## Greenfield Bilingual School, Site #202

1711 S 35TH STREET  
Milwaukee, WI 53215

JANUARY 25, 2024

### 100% CONSTRUCTION DOCUMENTS

MPS Project Number: 8318  
SmithGroup Project Number: 14895

#### Table of Contents

Sheet Number	Sheet Title
G001	COVER SHEET
G002	GENERAL NOTES AND LEGEND
CV100	EXISTING CONDITIONS
CV101	EXISTING CONDITIONS
CE100	SITE PREPARATION AND EROSION CONTROL
CS100	SITE LAYOUT
CG100	GRADING PLAN
CU100	UTILITIES PLAN
CP100	PAVEMENT MARKINGS PLAN
CE500	EROSION CONTROL DETAILS
CS500	SITE DETAILS
CS501	SITE DETAILS
CS502	SITE DETAILS
CU500	UTILITY DETAILS
CU501	UTILITY DETAILS
CU502	UTILITY DETAILS
CP500	PAVEMENT MARKING DETAILS
CP501	PAVEMENT MARKING DETAILS
L300	PLANTING PLAN
L500	PLANTING NOTES & DETAILS
L501	PLANTING DETAILS
L502	PLANTING SCHEDULE

Prepared for:

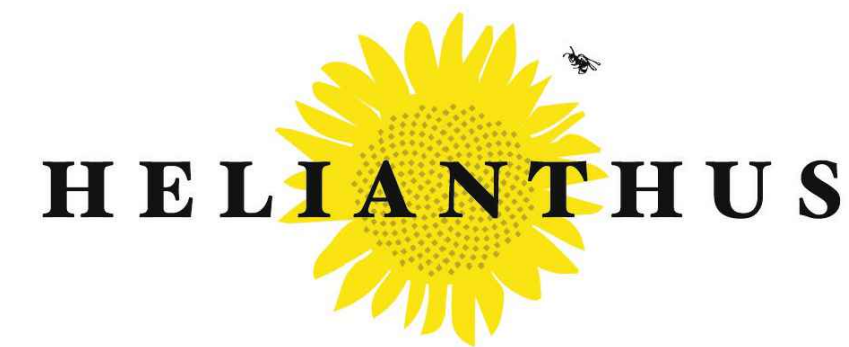


Milwaukee Public Schools  
5225 W. Vliet Street  
Milwaukee, WI 53208  
Switchboard: (414) 475-8393

Prepared by:

**SMITHGROUP**

233 NORTH WATER STREET  
SUITE 502  
MILWAUKEE, WI 53202  
414.615.9570  
www.smithgroup.com



1836 W. FOND DU LAC AVE.  
MILWAUKEE, WI 53205  
414.622.0103

#### DEDUCT ALTERNATES

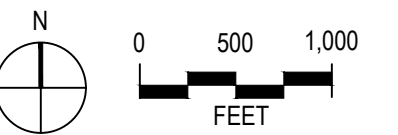
**DEDUCT ALTERNATE 1 - NATURE PLAY**  
BASE BID INCLUDES THE FULL INSTALLATION OF NATURE PLAY AREA AS INDICATED ON THE PLANS.  
DEDUCT ALTERNATE INCLUDES:  
- INSTALLATION OF CONCRETE CURB, ENGINEERED WOOD FIBER, ADA RAMP PRODUCT, AND UNDERDRAIN ONLY. NO INSTALLATION OF NATURE PLAYGROUND PLAY FEATURES.

**DEDUCT ALTERNATE 2 (INCLUDING ALTERNATE 2-A, 2-B, AND 2-C) - METAL SEATING**  
BASE BID INCLUDES THE FULL INSTALLATION OF EXPANDED METAL BENCHES AND PICNIC TABLES AS INDICATED ON THE PLANS.  
DEDUCT ALTERNATE INCLUDES:  
- INSTALLATION OF CONCRETE BENCH PADS AND ASPHALT SURFACE ONLY. BENCHES AND PICNIC TABLES SHALL NOT BE PROVIDED.

**DEDUCT ALTERNATE 3 - MUSICAL INSTRUMENTS**  
BASE BID INCLUDES THE FULL INSTALLATION OF MUSICAL INSTRUMENTS AS INDICATED ON THE PLANS. DEDUCT ALTERNATE INCLUDES:  
- INSTALLATION OF CONCRETE PAD ONLY. MUSICAL INSTRUMENTS SHALL NOT BE PROVIDED.



PROJECT VICINITY MAP



PROJECT LOCATION MAP





























2024 GREEN  
INFRASTRUCTURE  
UPGRADES  
GREENFIELD BILINGUAL  
SCHOOL



**SMITHGROUP**

233 NORTH WATER STREET  
SUITE 502  
MILWAUKEE, WI 53202  
414.615.9570  
www.smithgroup.com



1836 W. Fond Du Lac Ave.  
Milwaukee, WI 53205  
414-622-0103

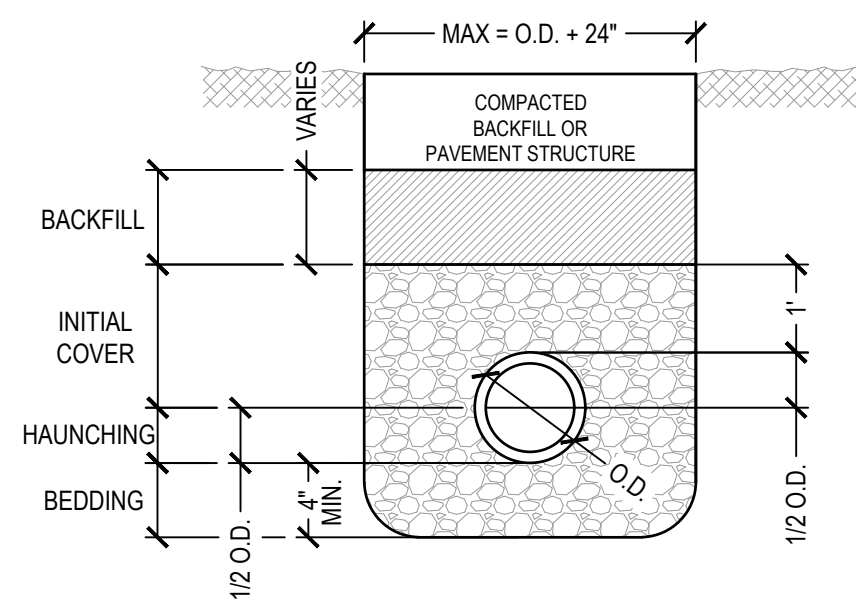
ISSUED FOR	REV	DATE
100% CD		01/25/2024

SEALS AND SIGNATURES

SITE ADDRESS  
**SITE # 202**  
1711 S 35TH STREET  
MILWAUKEE, WI 53215

DRAWING TITLE  
**UTILITY DETAILS**

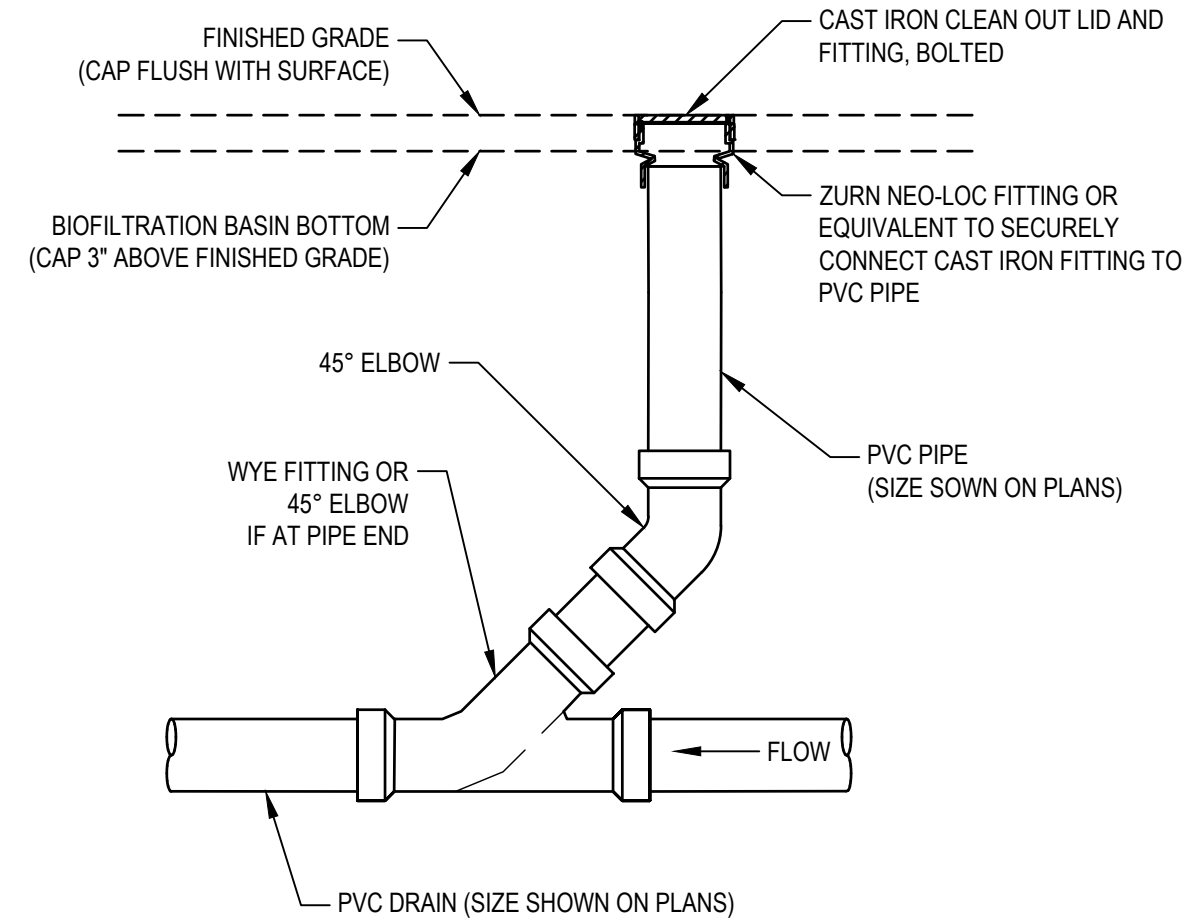
SCALE 14895  
PROJECT NUMBER 8318, DIVISION 2  
MPS PROJECT NUMBER  
**CU500**  
DRAWING NUMBER



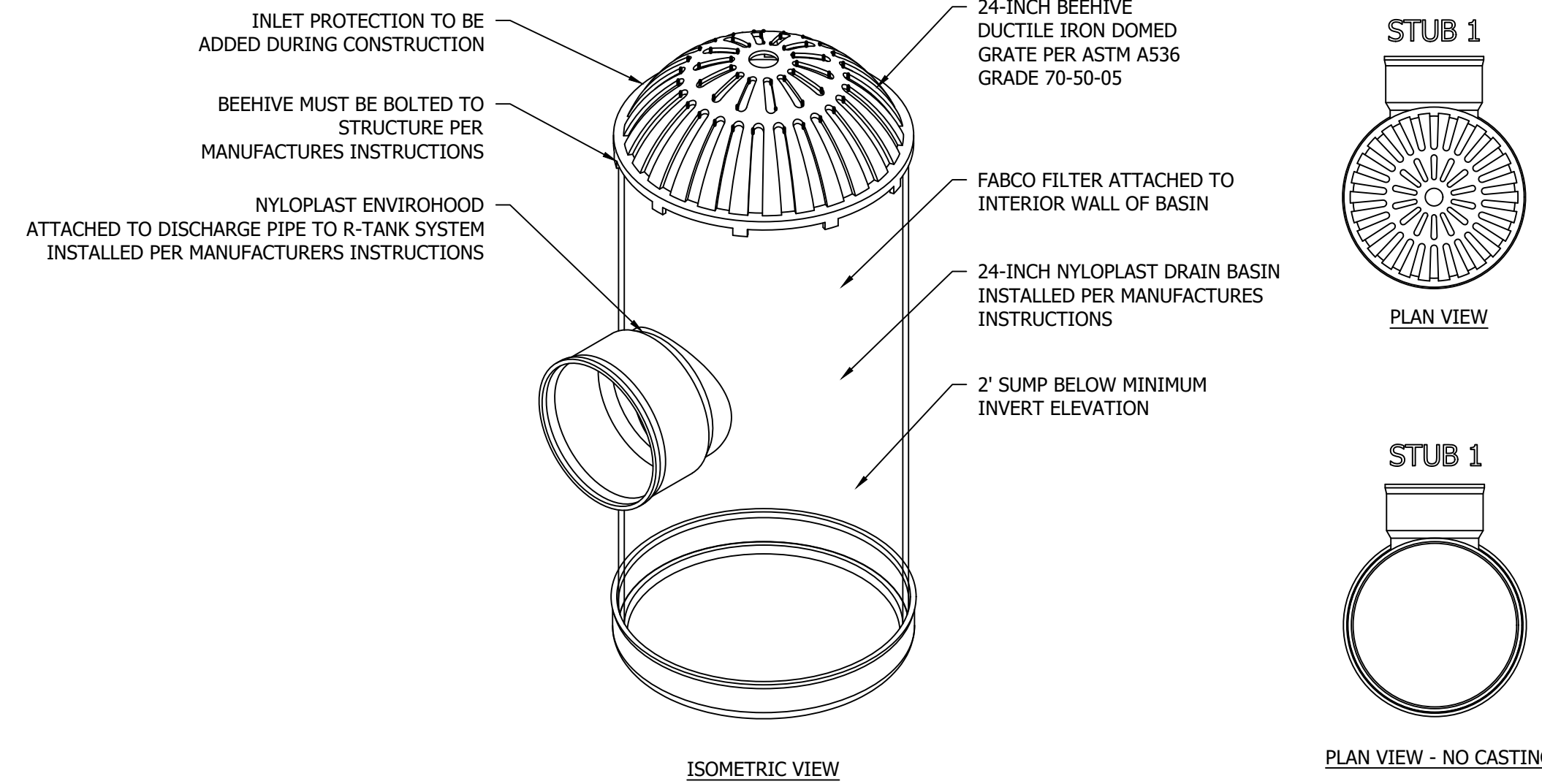
**BEDDING AND INITIAL BACKFILL:**  
 BACKFILL MATERIAL CONTAINING NO STONES LARGER THAN 3" AND NO HARD OR FROZEN LUMPS OF EARTH, PER SPECIFICATIONS  
 CRUSHED STONE BEDDING\*

\* BEDDING SAND OR CRUSHED STONE SCREENINGS SHALL BE USED FOR DUCTILE IRON PIPE

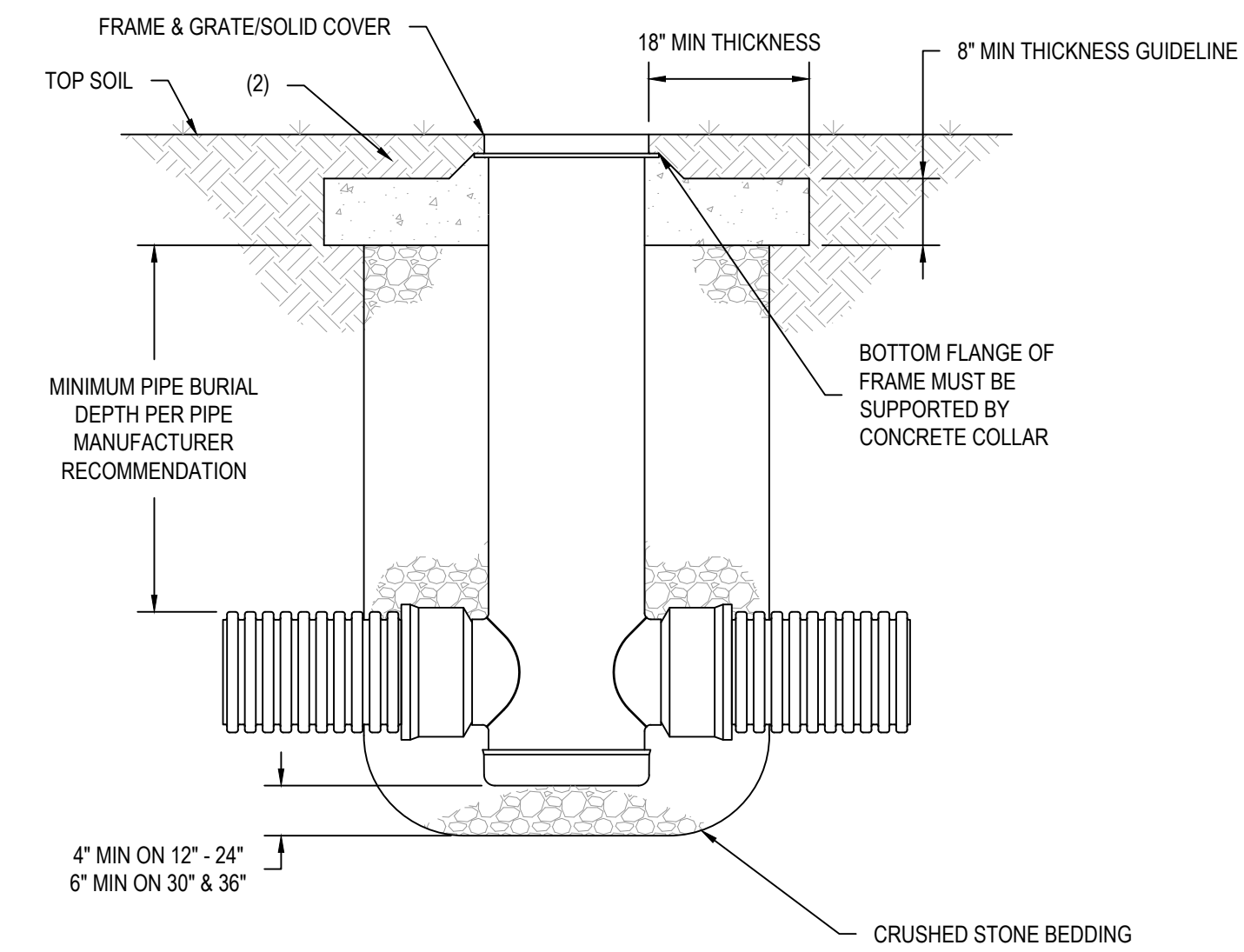
**1 PIPE BEDDING** SCALE: 1" = 1'-0"



**2 UNDERDRAIN CLEANOUT** SCALE: 3/4" = 1'-0"

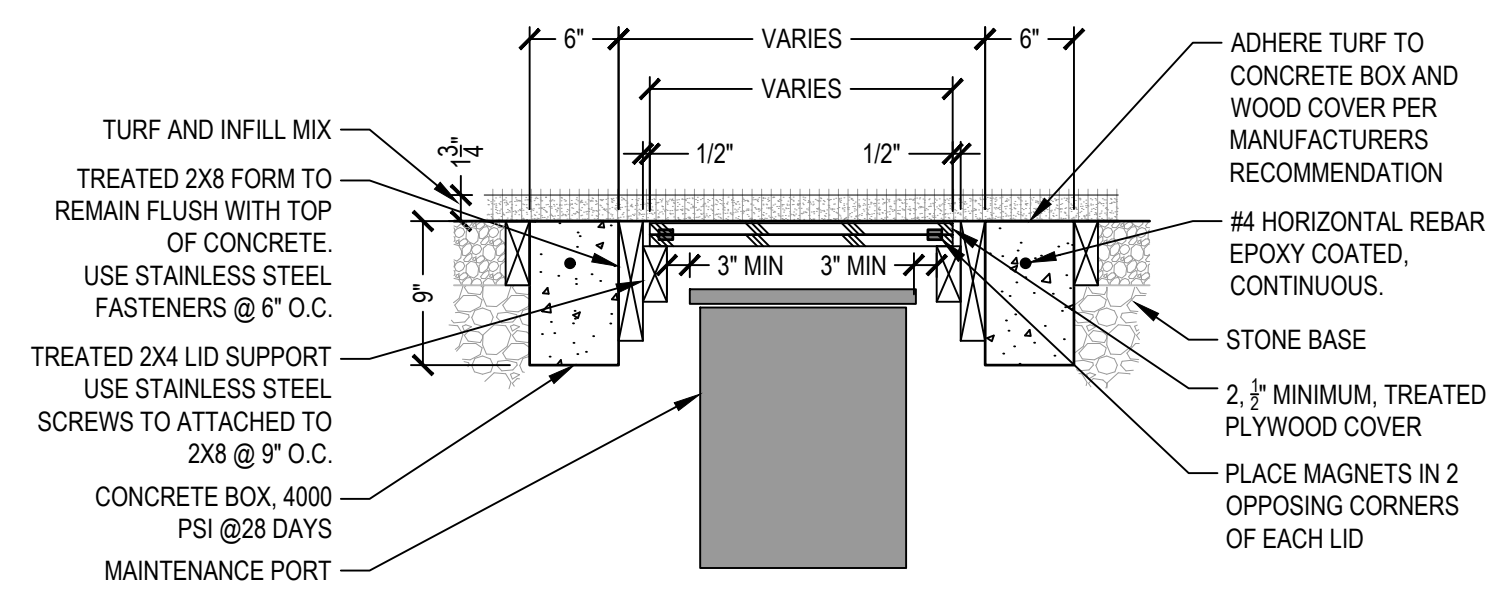


**3 STANDPIPE WITH BEEHIVE GRATE (CB1)** SCALE: 1" = 1'-0"

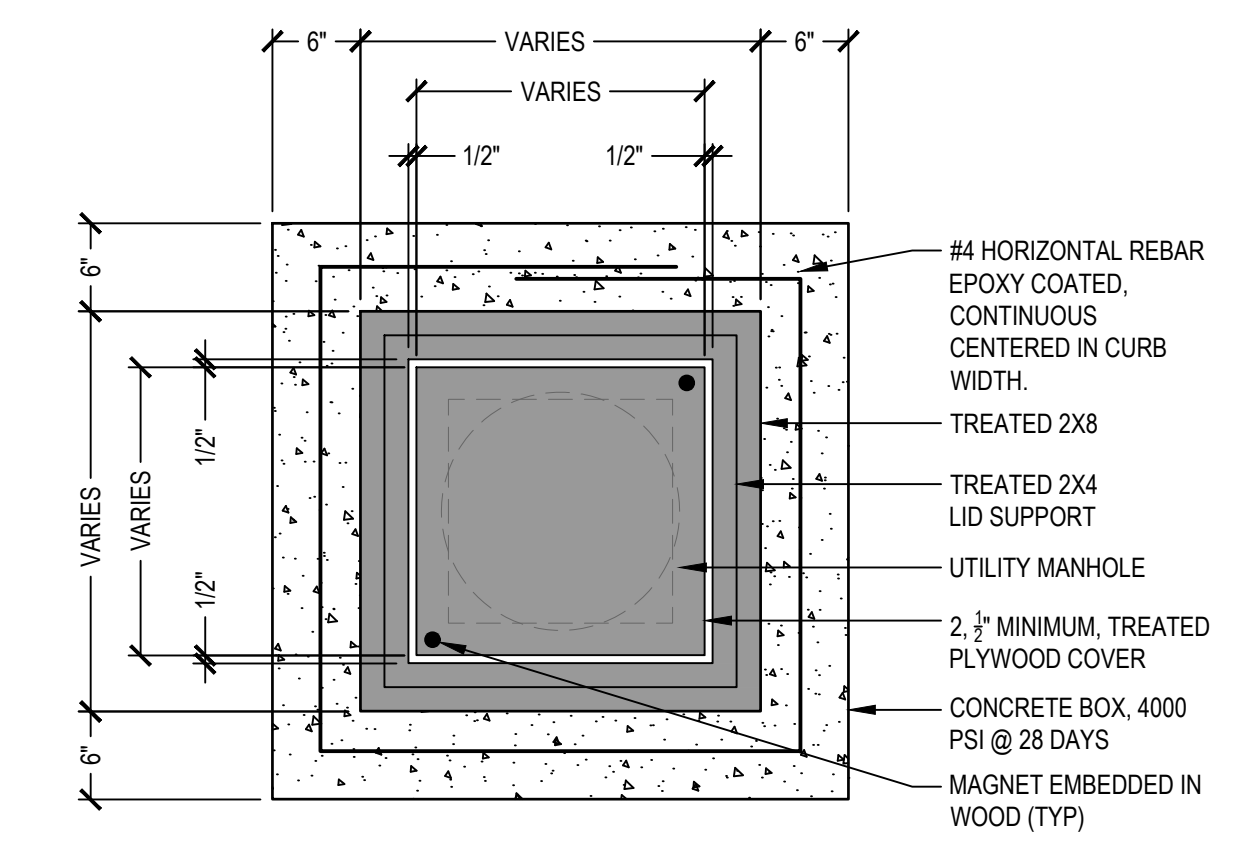


- REFER TO CU100 FOR SIZE OF DRAIN BASIN AND COVER/GRATE TYPE
- DESIGN SHOULD ACCOUNT FOR ROOT DEPTH TO ALLOW TURF TO GROW AND PREVENT EROSION AROUND GRATE SO THAT HAZARDS DO NOT FORM.

**4 TYPICAL DRAIN BASIN** SCALE: 1" = 1'-0"

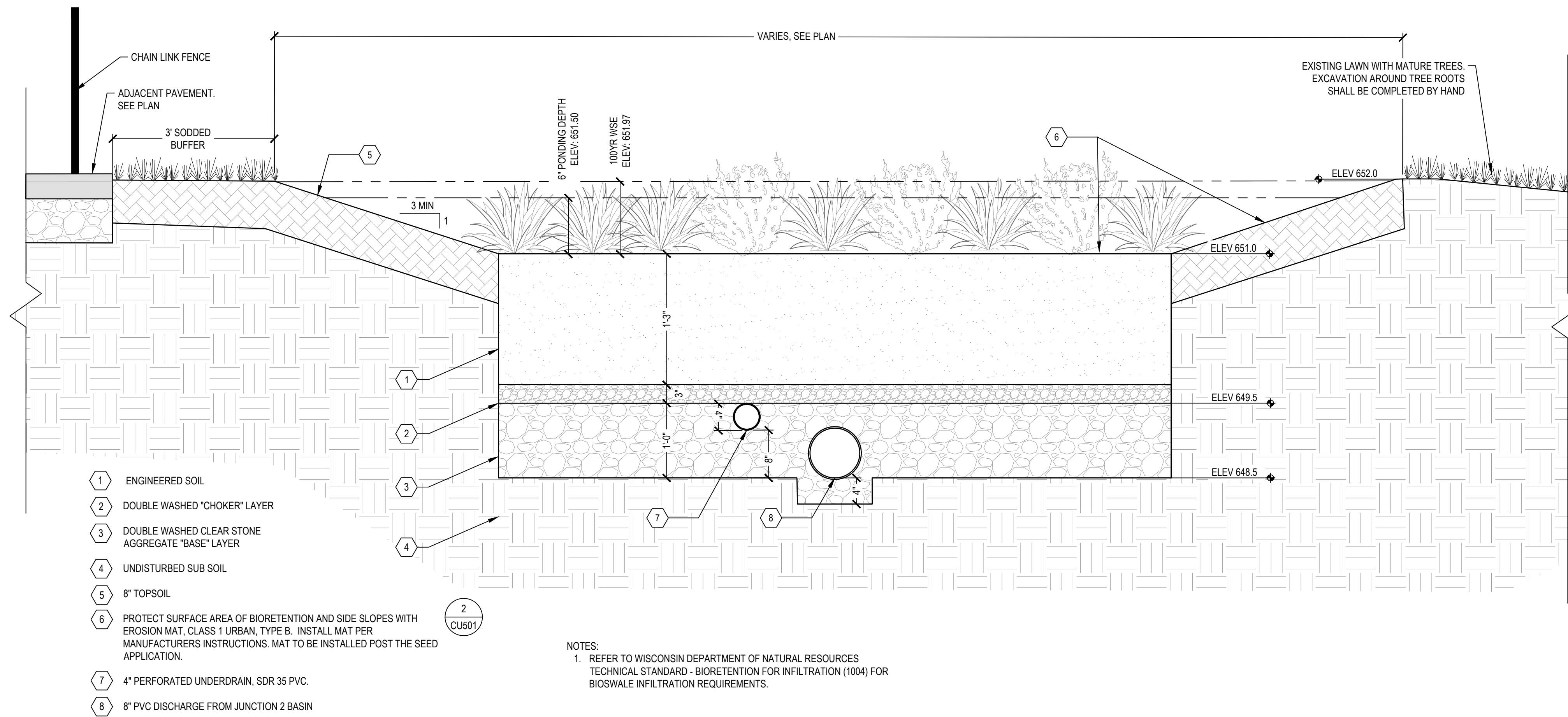


**5 TURF MAINTENANCE COVER PROFILE VIEW** SCALE: 1" = 1'-0"



**6 TURF MAINTENANCE COVER PLAN VIEW** SCALE: 1" = 1'-0"

FILE: C:\Users\yiliu\SmithGroup Companies inc\PRJ - 14895 - Consultants - Consultants\CAD\05 Civil\02\_Greenfield Bilingual\14895-D2-CU500.dwg USER: rlu DATE: Jan 25 2024 TIME: 09:01 pm



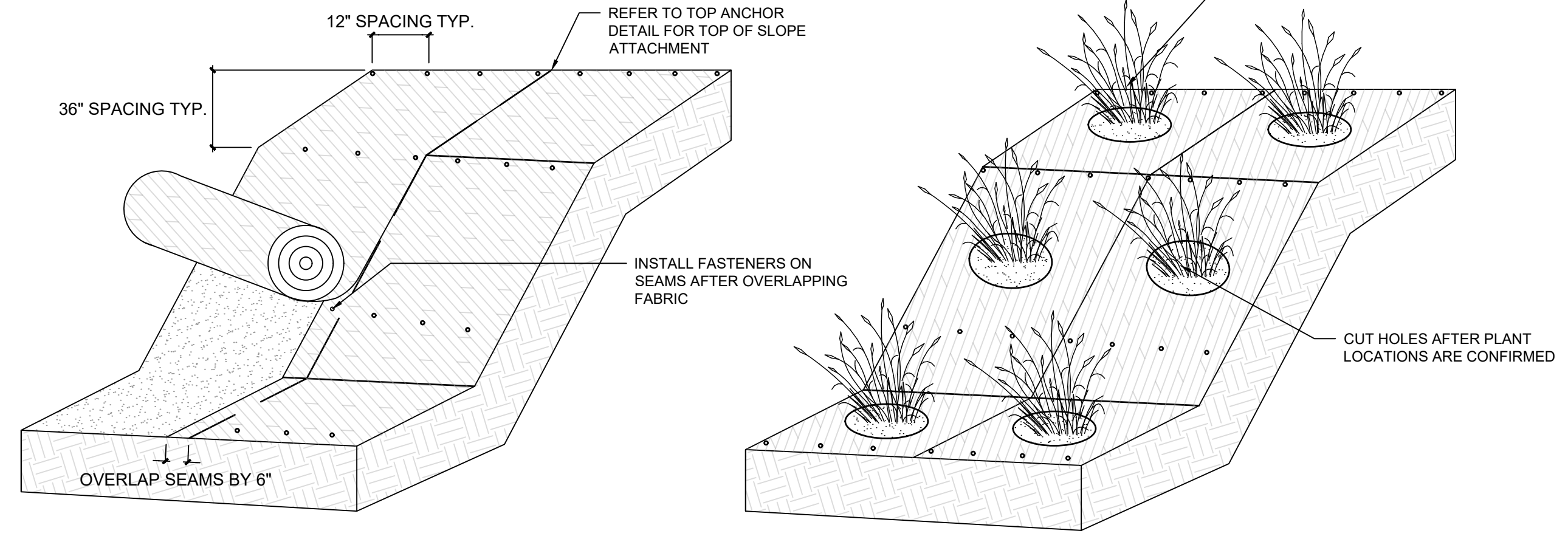
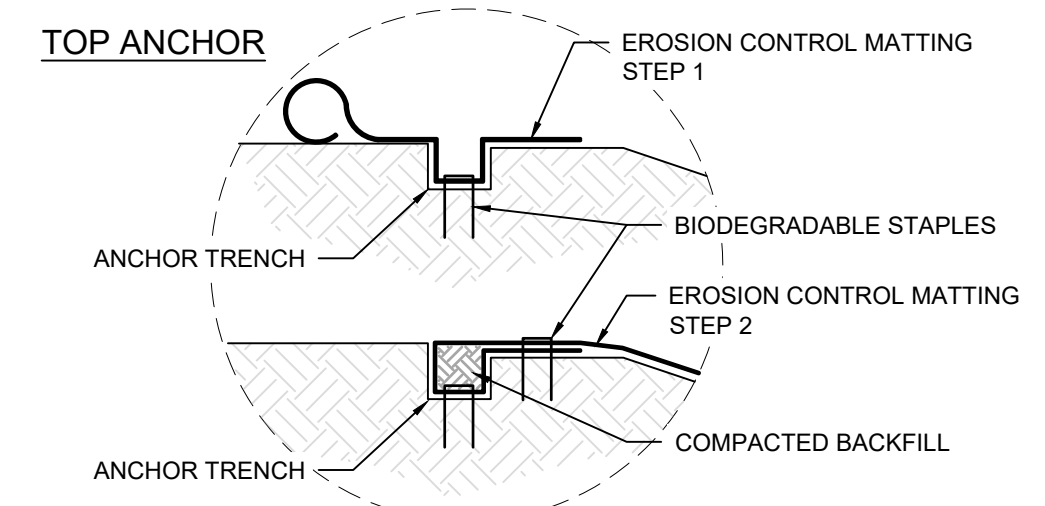
- 1 ENGINEERED SOIL
- 2 DOUBLE WASHED "CHOKER" LAYER
- 3 DOUBLE WASHED CLEAR STONE AGGREGATE "BASE" LAYER
- 4 UNDISTURBED SUB SOIL
- 5 8" TOPSOIL
- 6 PROTECT SURFACE AREA OF BIORETENTION AND SIDE SLOPES WITH EROSION MAT, CLASS 1 URBAN, TYPE B. INSTALL MAT PER MANUFACTURERS INSTRUCTIONS. MAT TO BE INSTALLED POST THE SEED APPLICATION.
- 7 4" PERFORATED UNDERDRAIN, SDR 35 PVC.
- 8 8" PVC DISCHARGE FROM JUNCTION 2 BASIN

NOTES:  
 1. REFER TO WISCONSIN DEPARTMENT OF NATURAL RESOURCES TECHNICAL STANDARD - BIORETENTION FOR INFILTRATION (1004) FOR BIOSWALE INFILTRATION REQUIREMENTS.

1 BIORETENTION CELL

SCALE: 1" = 1'

- GENERAL NOTES:
1. SEE SPECIFICATIONS FOR EROSION CONTROL MATTING MATERIAL- MUST BE BIODEGRADABLE
  2. SEE SPECIFICATIONS FOR FASTENERS- MUST BE BIODEGRADABLE
  3. SPACE FASTENERS AS SHOWN (12" HORIZONTALLY/ 36" VERTICALLY)
    - 3.1. FASTENERS TO BE DRIVEN IN AFTER SEAMS ARE OVERLAPPED
    - 3.2. LEAVE 2" BETWEEN ANY EDGE OF MATTING AND FABRIC
  4. CONFIRM PLANT LOCATIONS PRIOR TO CUTTING MAT MATERIAL
  5. TREES MUST BE PLANTED PRIOR TO MAT INSTALLATION, HOLD MATTING 4" FROM TRUNK



2 EROSION CONTROL MATTING ON SLOPE (MPS STANDARD)

NTS

# 2024 GREEN INFRASTRUCTURE UPGRADES

## GREENFIELD BILINGUAL SCHOOL



# SMITHGROUP

233 NORTH WATER STREET  
 SUITE 502  
 MILWAUKEE, WI 53202  
 414.615.9570  
 www.smithgroup.com



1836 W. Fond Du Lac Ave.  
 Milwaukee, WI 53205  
 414-622-0103

ISSUED FOR	REV	DATE
100% CD		01/25/2024

SEALS AND SIGNATURES

SITE ADDRESS

SITE # 202  
 1711 S 35TH STREET  
 MILWAUKEE, WI 53215

DRAWING TITLE

UTILITY DETAILS

SCALE 14895

PROJECT NUMBER 8318, DIVISION 2

MPS PROJECT NUMBER

DRAWING NUMBER CU501















