

# 2024 Green Infrastructure Upgrades

## Lincoln Avenue School, Site #250

1817 W. Lincoln Avenue  
Milwaukee, WI 53215

JANUARY 25, 2024

### 100% CONSTRUCTION DOCUMENTS

MPS Project Number: 8319  
SmithGroup Project Number: 14895

#### Table of Contents

Sheet Number	Sheet Title
G001	COVER SHEET
G002	GENERAL NOTES AND LEGEND
CV100	EXISTING CONDITIONS
CV101	EXISTING CONDITIONS
CE100	SITE PREPARATION AND EROSION CONTROL
CS100	SITE LAYOUT
CG100	GRADING PLAN
CU100	UTILITIES PLAN
CP100	PAVEMENT MARKINGS PLAN
CE500	EROSION CONTROL DETAILS
CS500	SITE DETAILS
CS501	SITE DETAILS
CS502	SITE DETAILS
CS503	SITE DETAILS
CU500	UTILITY DETAILS
CU501	UTILITY DETAILS
CU502	UTILITY DETAILS
CU503	UTILITY DETAILS
CP500	PAVEMENT MARKING DETAILS
CP501	PAVEMENT MARKING DETAILS
L300	PLANTING PLAN
L301	PLANTING PLAN ENLARGEMENTS
L500	PLANTING NOTES & DETAILS
L501	PLANTING DETAILS
L502	PLANTING SCHEDULE
L503	PLANTING SCHEDULE

Prepared for:



Milwaukee Public Schools  
5225 W. Vliet Street  
Milwaukee, WI 53208  
Switchboard: (414) 475-8393

Prepared by:

**SMITHGROUP**

233 NORTH WATER STREET  
SUITE 502  
MILWAUKEE, WI 53202  
414.615.9570  
www.smithgroup.com



1836 W. FOND DU LAC AVE.  
MILWAUKEE, WI 53205  
414.622.0103

#### DEDUCT ALTERNATES

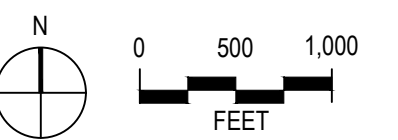
**DEDUCT ALTERNATE 1 - 18TH AVENUE STREET TREES**  
BASE BID INCLUDES THE FULL INSTALLATION OF TREES AND VEGETATION PROPOSED FOR THE EAST SIDE OF THE SCHOOL ALONG 18TH AVENUE AS INDICATED ON THE PLANS.  
UNDER THE DEDUCT ALTERNATE:  
- THIS AREA SHALL REMAIN AS EXISTING WITH NO LANDSCAPE IMPROVEMENTS.

**DEDUCT ALTERNATE 2 - FRONT ENTRANCE IMPROVEMENTS**  
BASE BID INCLUDES ALL FEATURES OF THE FRONT ENTRANCE CLASSROOM AS INDICATED ON THE PLANS.  
DEDUCT ALTERNATE INCLUDES:  
- FOUR-SQUARE PAVEMENT MARKINGS. ALL OTHER IMPROVEMENTS WITHIN THIS ZONE SHALL BE DELETED FROM THE BID, INCLUDING ASPHALT REMOVAL, TOPSOIL, GRADING, PICNIC TABLES, AND LANDSCAPING.

**DEDUCT ALTERNATE 3 - NATURE PLAY**  
BASE BID INCLUDES THE FULL INSTALLATION OF NATURE PLAY AREA AS INDICATED ON THE PLANS. DEDUCT ALTERNATE INCLUDES:  
- INSTALLATION OF CONCRETE CURB, ENGINEERED WOOD FIBER, ADA RAMP PRODUCT, AND UNDERDRAIN ONLY. NO INSTALLATION OF NATURE PLAYGROUND PLAY FEATURES.



PROJECT VICINITY MAP



PROJECT LOCATION MAP









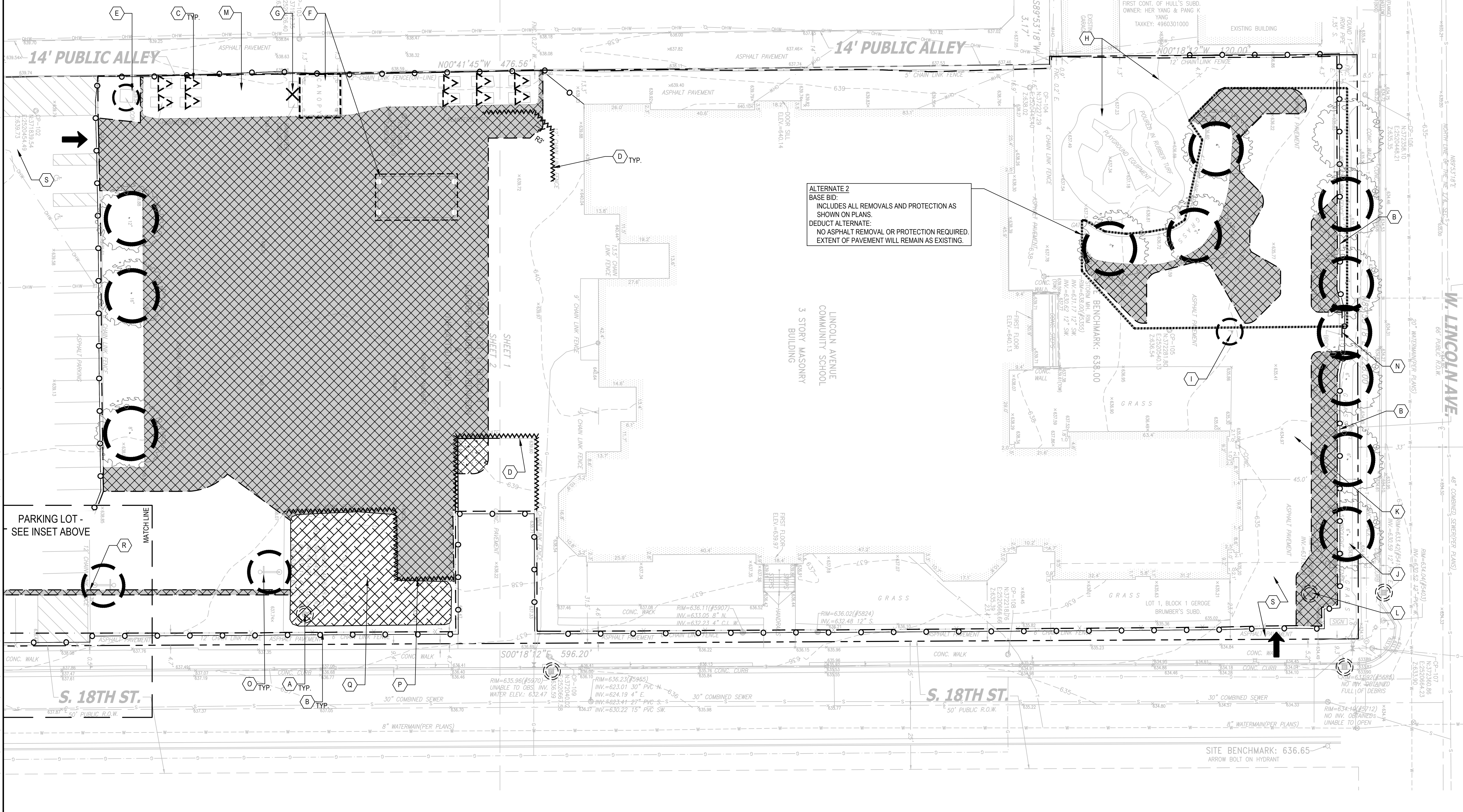
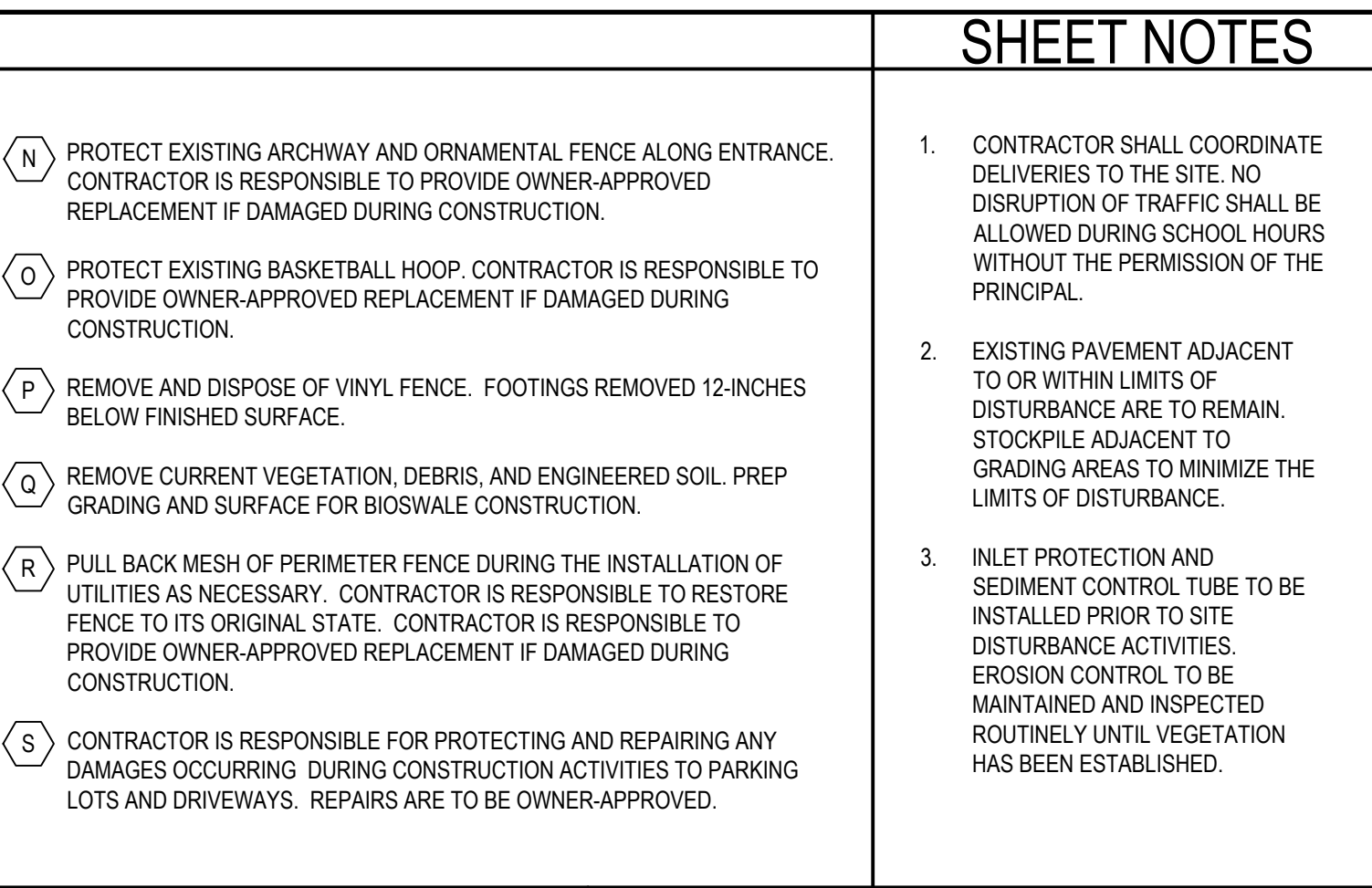
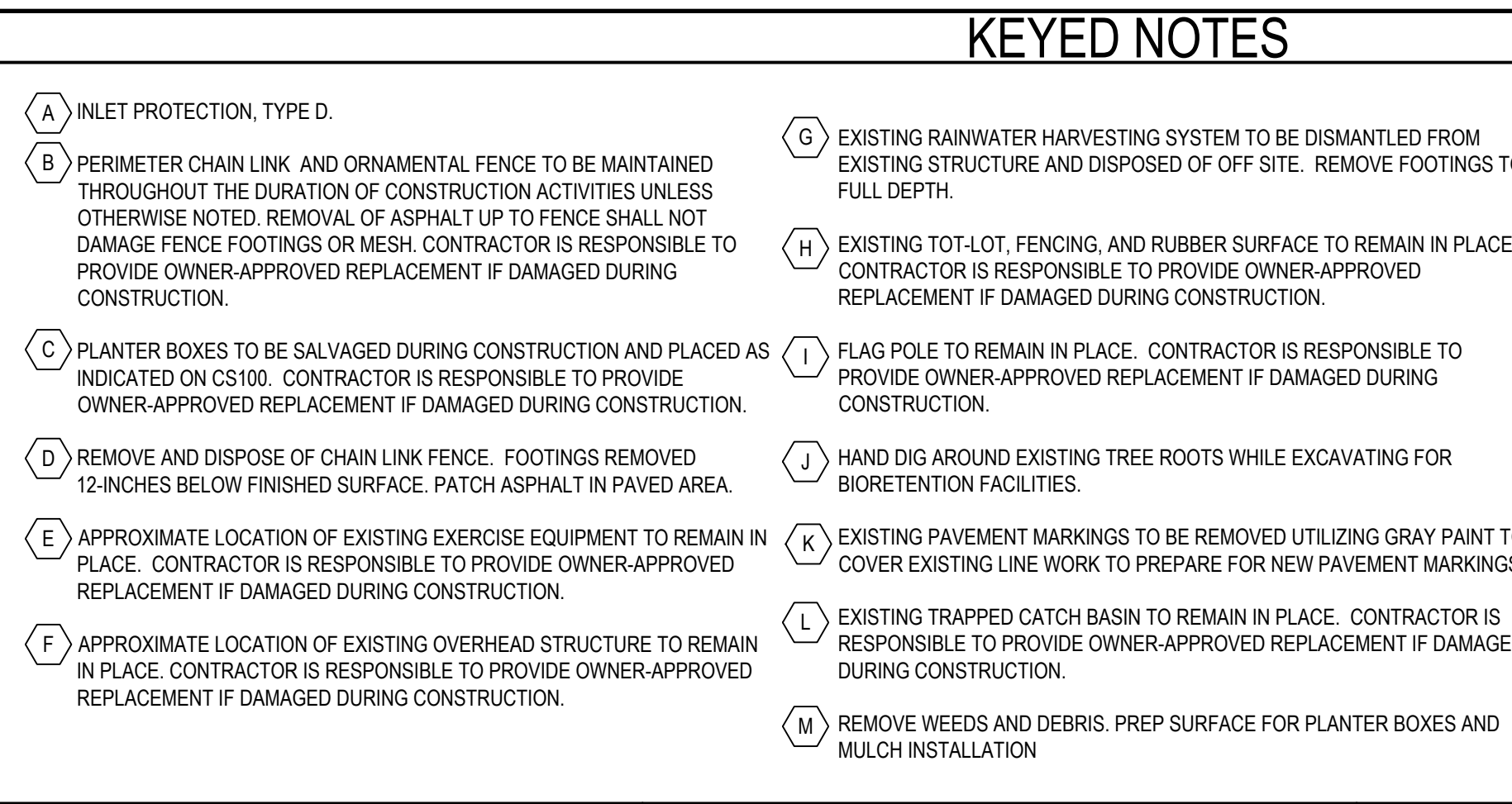
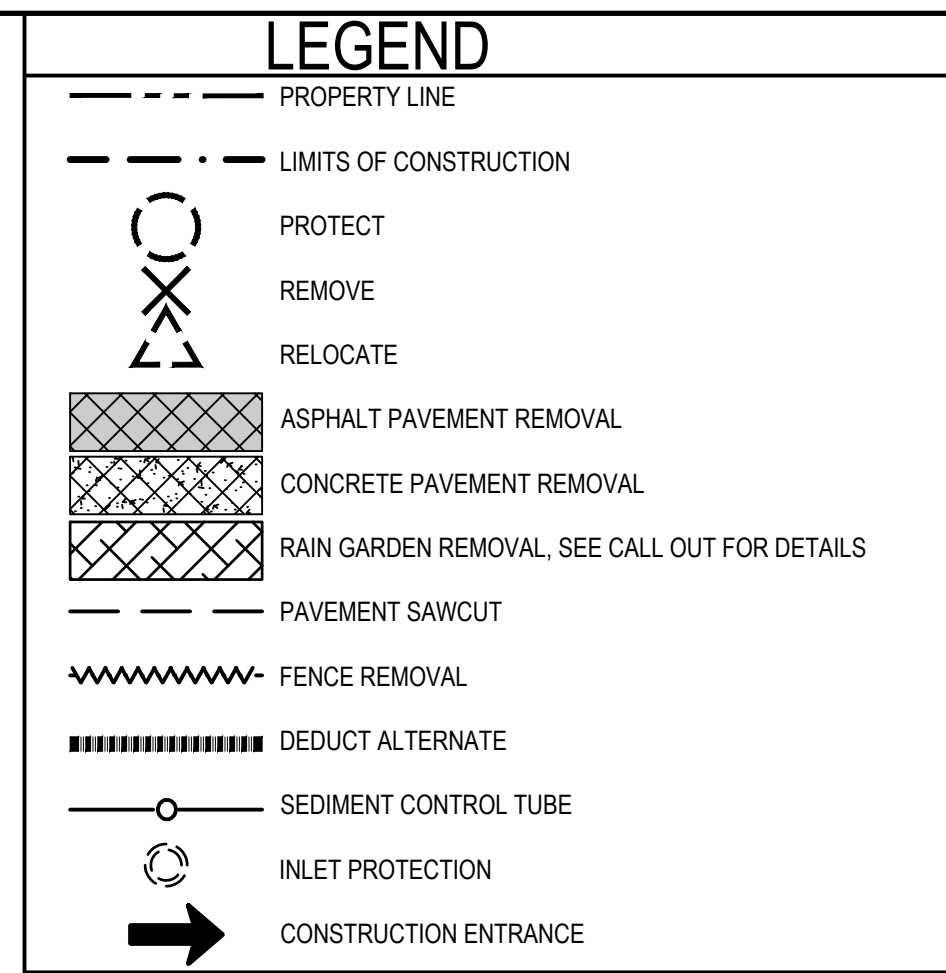
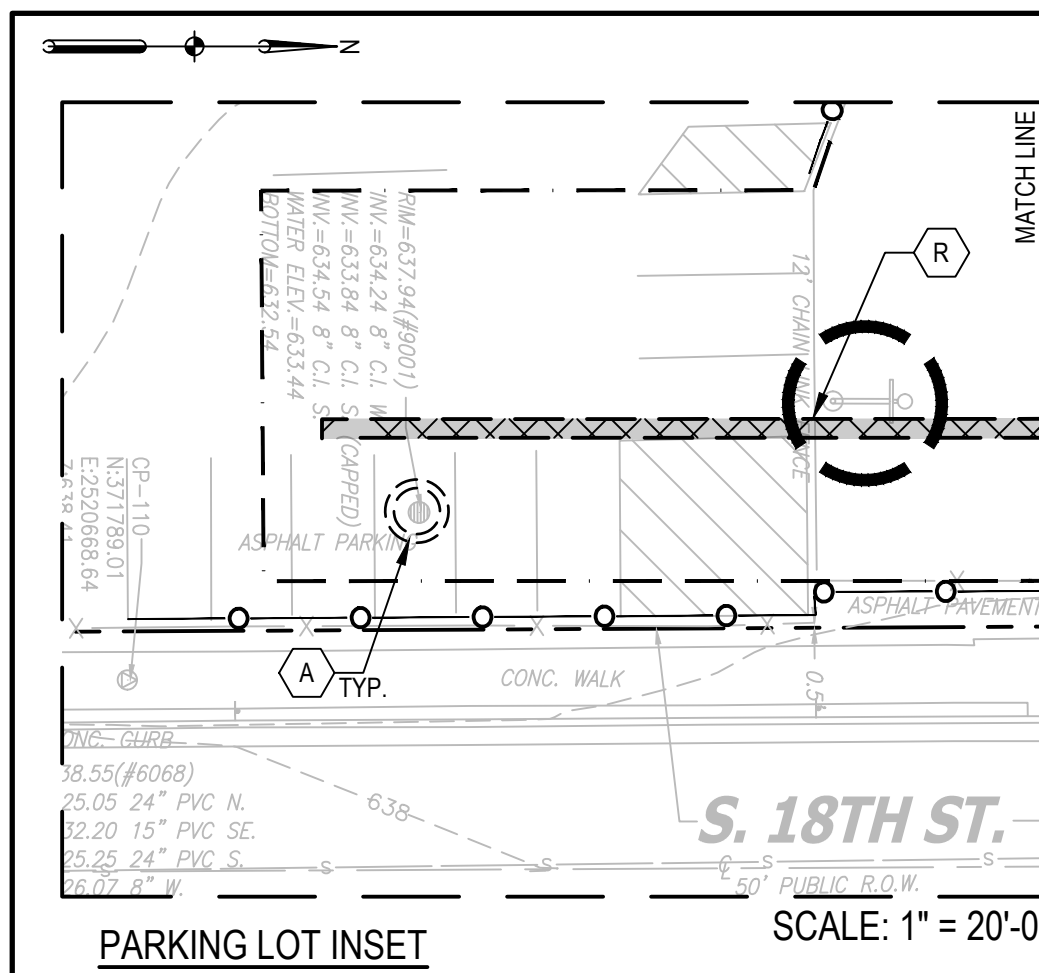








FILE: C:\Users\kkoeh\SmithGroup\Projects\14895 - Consultants\CAD\05 - Consultants\CAD\05 - Lincoln Avenue\14895-03-CE100-SITE PREP.dwg USER: kkoeh DATE: Jan. 25 2024 TIME: 08:54 pm



**ALTERNATE 2**  
 BASE BID:  
 INCLUDES ALL REMOVALS AND PROTECTION AS SHOWN ON PLANS.  
 DEDUCT ALTERNATE:  
 NO ASPHALT REMOVAL OR PROTECTION REQUIRED.  
 EXTENT OF PAVEMENT WILL REMAIN AS EXISTING.

# 2024 GREEN INFRASTRUCTURE UPGRADES LINCOLN AVENUE SCHOOL



## SMITHGROUP

233 NORTH WATER STREET  
 SUITE 502  
 MILWAUKEE, WI 53202  
 414.615.9570  
 www.smithgroup.com



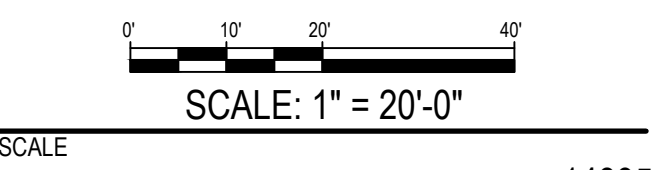
1836 W. Fond Du Lac Ave.  
 Milwaukee, WI 53205  
 414-622-0103

ISSUED FOR	REV	DATE
100% CD		01/25/2024

SEALS AND SIGNATURES

SITE ADDRESS  
 SITE # 250  
 1817 W. LINCOLN AVENUE  
 MILWAUKEE, WI 53215

DRAWING TITLE  
**SITE PREPARATION AND EROSION CONTROL**



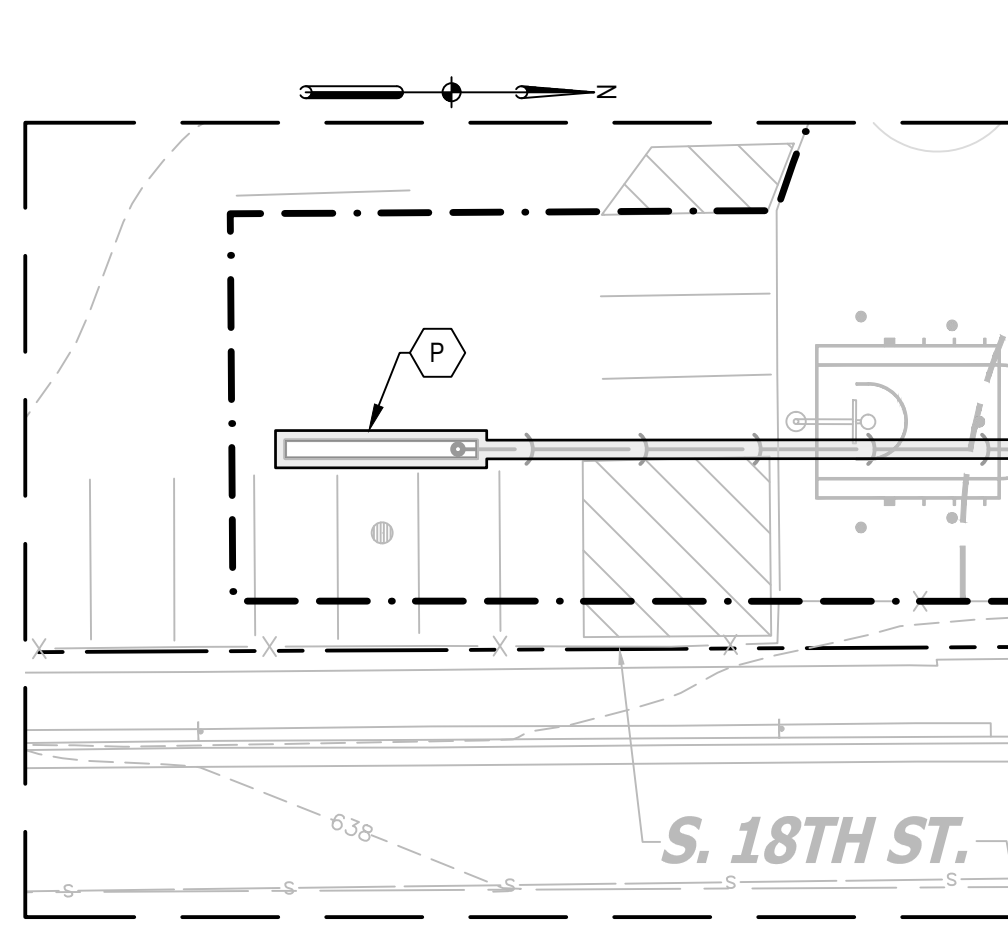
PROJECT NUMBER	8319, DIVISION 3
MPS PROJECT NUMBER	CE100
DRAWING NUMBER	

14895



FILE: C:\Users\kkoach\SmithGroup Companies inc\PRJ - 14895 - Consultants\CAD\05 Civil\03 Lincoln Avenue\14895-D3-CS100-SITE LAYOUT.dwg USER: kkoach DATE: Jan, 25 2024 TIME: 08:55 pm

PARKING LOT INSET



**LEGEND**

--- PROPERTY LINE	○ ○ ○ MUSICAL INSTRUMENTS AS SPECIFIED (3)
- - - LIMITS OF CONSTRUCTION	□ ADA RAMP PRODUCT AT ENGINEERED WOOD FIBER AREA AS SPECIFIED (1)
--- CHAIN LINK FENCE (HEIGHT VARIES, REFER TO KEYED NOTES FOR SIZE)	⊠ 30" X 48" ADA CLEARANCE ZONE
- - - APPROXIMATE EDGE OF PLAY EQUIPMENT	⊙ BOLLARD (4) (3) CS503
--- LOW ROPE FENCE (5) CS501	■ ASPHALT PAVEMENT (1) CS500
--- EXPANSION JOINT (8) CS500	■ CONCRETE PAVEMENT (5) CS500 (7) CS500
--- DEDUCT ALTERNATE	■ REINFORCED CONCRETE PAVEMENT (9) CS500
■ WOOD BENCH (12) (4) CS501	■ ENGINEERED WOOD FIBER (1) CS501
■ EXPANDED METAL PICNIC TABLE AS SPECIFIED (5)	■ MULCH ON EXISTING COMPACTED BASE (3) CS500
○ STEPPING STONES (22) (3) CS501	■ SYNTHETIC TURF (2) CS501
□ PLANTER BOXES RELOCATED (10)	
● ABOVE GROUND RAINWATER CISTERN (1) CU503	
■ EXPANDED METAL BENCH AS SPECIFIED (6)	

**KEYED NOTES**

(A) SOCCER FIELD	(J) ASPHALT PATCH AT DEMOLISHED BACKSTOP POST
(B) BASKETBALL COURT	(K) CONCRETE PAD FOR MUSICAL INSTRUMENTS. INSTRUMENTS ARE SURFACE MOUNTED. CONFIRM PLACEMENT WITH OWNER PRIOR TO FINAL INSTALLATION.
(C) EDGE CONDITION BETWEEN ENGINEERED WOOD FIBER AREA AND EXISTING CHAIN LINK FENCE.	(L) 6' HEIGHT GALVANIZED CHAIN LINK FENCE WITH 16" WIDTH VEHICLE AND 4" WIDTH PEDESTRIAN GATE (6) CS501 (7) CS501 (8) CS501
(D) 4' HEIGHT RELOCATED CHAIN LINK FENCE ON 12" WIDTH CURB (1) CS502	(M) 12' HEIGHT GALVANIZED CHAIN LINK FENCE ON 12" WIDTH CURB (1) CS501
(E) EXISTING FLAG POLE TO REMAIN	(N) FLUSH CURB AT ENGINEERED WOOD FIBER AREA (1) CS501
(F) OUTDOOR CLASSROOM WITH PRE-INSTALLED OVERHEAD STRUCTURE. THE CENTER LINE OF THE CONCRETE PAD SHOULD ALIGN WITH THE OVERHEAD STRUCTURE'S CENTER LINE.	(O) BIOSWALE. REFER TO GRADING PLAN, SHEET CG100.
(G) NATURE PLAYGROUND (SMALL SIZE) CONTRACTOR HAS FLEXIBILITY IN INSTALLATION METHODS AS LONG AS IT MEETS SAFETY REGULATIONS AND PROJECT SPECIFICATIONS. PLAY COMPONENTS MUST MEET ASTM AND CSPC SAFETY GUIDELINES. SEE SPECIFICATIONS FOR ADDITIONAL INFORMATION.	(P) EDGE CONDITION BETWEEN EXISTING AND NEW ASPHALT (4) CS503
(H) PAVEMENT MARKINGS. REFER TO SHEET PLAN CP100	(Q) EDGE CONDITION BETWEEN ASPHALT AND LANDSCAPE, TYP. (2) CS503
(I) FLUSH CURB AT SYNTHETIC TURF (2) CS501	(R) ENTRY ARCH STRUCTURE (2) CS502
	(S) REINFORCED CONCRETE FOR RAINWATER HARVESTING CISTERN. ALIGN 5'X5' CONCRETE PAD WITH EDGE OF STRUCTURE ROOF AND GUTTER DOWNSPOUT SYSTEM.
	(T) PROVIDE EXPANSION JOINT BETWEEN CURB AND CONCRETE BENCH PADS. (8) CS500

**SHEET NOTES**

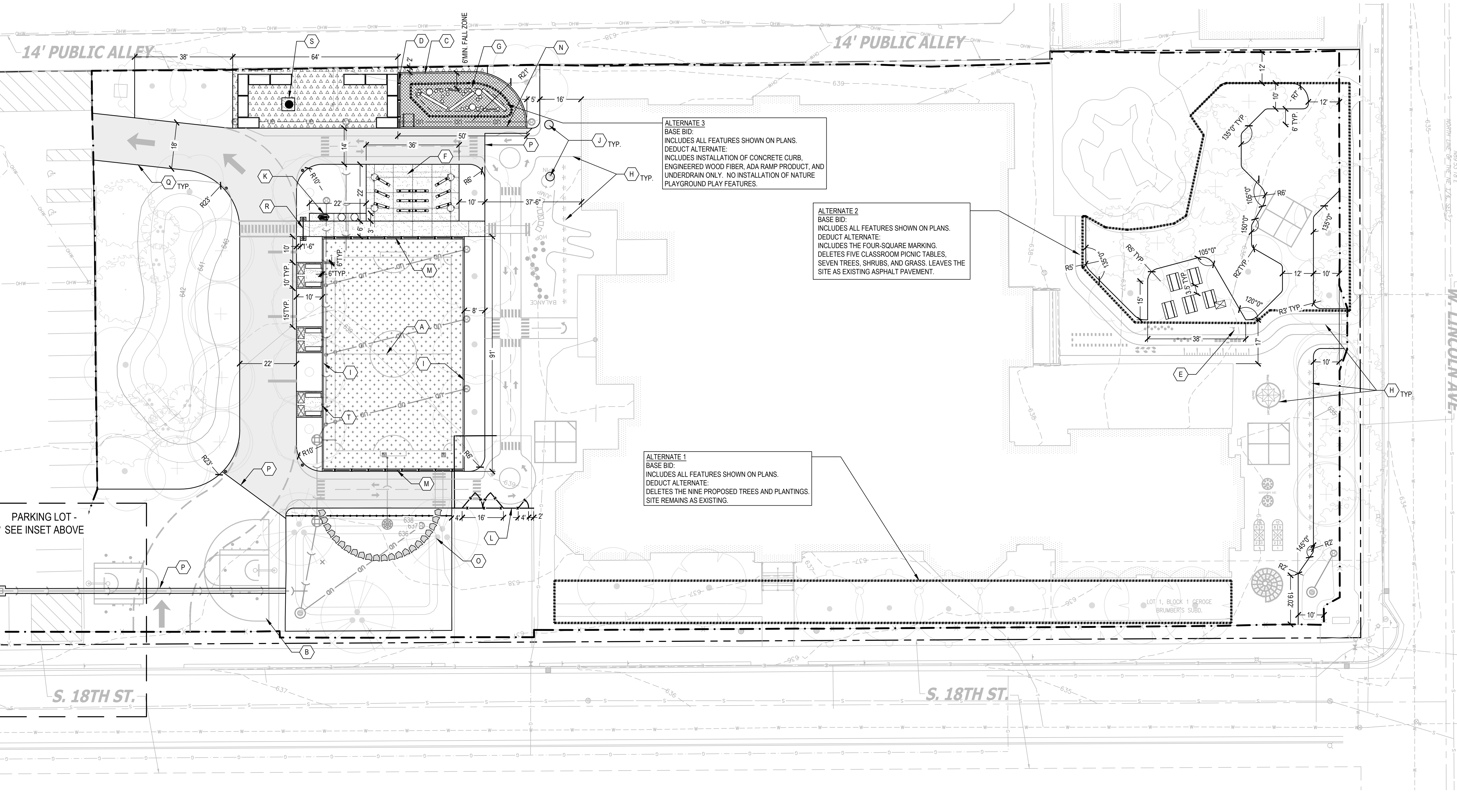
- LAYOUT INFORMATION WILL BE PROVIDED TO CONTRACTOR IN ELECTRONIC CAD FORMAT FOR CONSTRUCTION LAYOUT. ANY DISCREPANCIES BETWEEN INFORMATION SHOWN AND CAD FILE SHALL BE BROUGHT TO ENGINEER'S ATTENTION PRIOR TO CONSTRUCTION.
- OVERHEAD STRUCTURES ARE TO REMAIN IN PLACE DURING CONSTRUCTION.
- REFER TO LANDSCAPE PLANS FOR LAWN AND PLANTING LOCATIONS.
- REFER TO SITE PAVEMENT PLAN FOR PAVEMENT AND FIELD MARKINGS, INCLUDING DESIGNATED PLAY AREAS AND ELEMENTS.
- MINIMIZE THE IMPACT TO TREE ROOTS DURING EXCAVATION AND GRADING. HAND DIG WITHIN DRIP LINE OF TREES.

**2024 GREEN INFRASTRUCTURE UPGRADES LINCOLN AVENUE SCHOOL**



**SMITHGROUP**

233 NORTH WATER STREET  
SUITE 502  
MILWAUKEE, WI 53202  
414.615.9570  
www.smithgroup.com



**ALTERNATE 3**  
BASE BID:  
INCLUDES ALL FEATURES SHOWN ON PLANS.  
DEDUCT ALTERNATE:  
INCLUDES INSTALLATION OF CONCRETE CURB, ENGINEERED WOOD FIBER, ADA RAMP PRODUCT, AND UNDERDRAIN ONLY. NO INSTALLATION OF NATURE PLAYGROUND PLAY FEATURES.

**ALTERNATE 2**  
BASE BID:  
INCLUDES ALL FEATURES SHOWN ON PLANS.  
DEDUCT ALTERNATE:  
INCLUDES THE FOUR-SQUARE MARKING, DELETES FIVE CLASSROOM PICNIC TABLES, SEVEN TREES, SHRUBS, AND GRASS. LEAVES THE SITE AS EXISTING ASPHALT PAVEMENT.

**ALTERNATE 1**  
BASE BID:  
INCLUDES ALL FEATURES SHOWN ON PLANS.  
DEDUCT ALTERNATE:  
DELETES THE NINE PROPOSED TREES AND PLANTINGS. SITE REMAINS AS EXISTING.

PARKING LOT - SEE INSET ABOVE

ISSUED FOR	REV	DATE
100% CD		01/25/2024

SEALS AND SIGNATURES

SITE ADDRESS  
**SITE # 250**  
1817 W. LINCOLN AVENUE  
MILWAUKEE, WI 53215

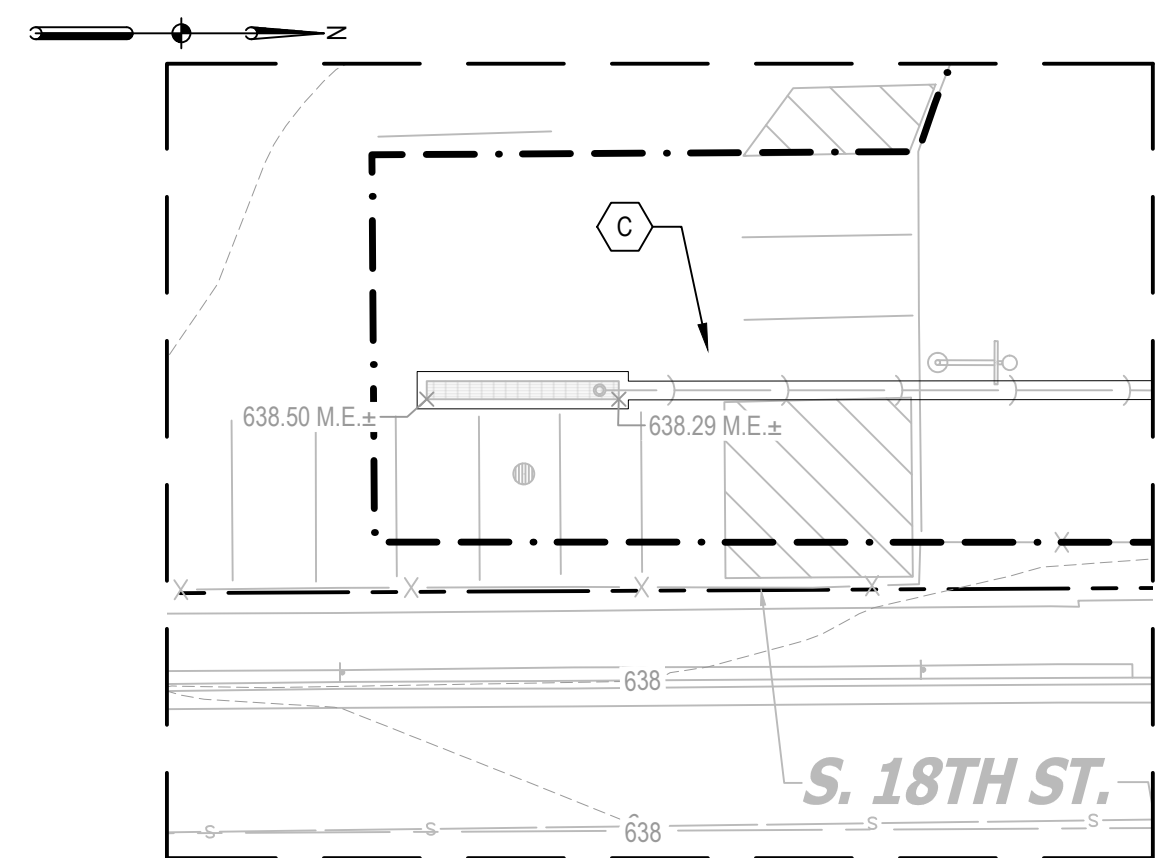
DRAWING TITLE  
**SITE LAYOUT**

SCALE  
0' 10' 20' 40'  
SCALE: 1" = 20'-0"

PROJECT NUMBER 14895  
MPS PROJECT NUMBER 8319, DIVISION 3  
DRAWING NUMBER **CS100**



FILE: C:\Users\kkoeh\SmithGroup Companies inc\PRJ - 14895 - Consultants\CAD\05 Civil\03 Lincoln Avenue\14895-D3-CG100-SITE GRADING.dwg USER: kkoeh DATE: Jan, 25 2024 TIME: 08:55 pm



PARKING LOT INSET

LEGEND

- 865--- EXISTING MAJOR CONTOUR
- 864--- EXISTING MINOR CONTOUR
- 861.50 X EXISTING SPOT ELEVATION
- 865— PROPOSED MAJOR CONTOUR
- 864— PROPOSED MINOR CONTOUR
- - - - GRADING LIMITS
- - - - PROPERTY BOUNDARY
- - - - LIMITS OF CONSTRUCTION
- ..... DEDUCT ALTERNATE
- 2.5% DRAINAGE SLOPE
- 861.50 X PROPOSED SPOT ELEVATION
- T/C 861.50 X TOP OF CURB ELEVATION
- [Hatched Box] ENGINEERED SOIL
- [Rectangular Box] R-TANK UNDERGROUND CISTERN
- [Arrow] DRAINAGE SWALE

KEYED NOTES

- (A) BIORETENTION
- (B) GRADED MOUND
- (C) NO GRADING. MAINTAIN EXISTING ASPHALT.
- (D) MINIMIZE THE IMPACT TO TREE ROOTS DURING EXCAVATION AND GRADING. HAND DIG WITHIN DRIP LINE OF TREE.

SHEET NOTES

1. PROPOSED SPOT ELEVATIONS SHOWN REPRESENT FINISH GROUND ELEVATION. REFER TO DETAILS FOR FOUNDATIONS AND OTHER KEY ELEVATIONS.
2. EXERCISE CAUTION TO NOT DAMAGE EXISTING UTILITIES TO REMAIN IN PLACE. CONTRACTOR TO CONTACT PUBLIC AND PRIVATE UNDERGROUND UTILITY LOCATING SERVICES TO HAVE THE SITE MARKED PRIOR TO ANY DIGGING OR EARTHWORK.
3. CROSS SLOPES ARE BETWEEN 1% - 1.8% AS DESIGNED PER MPS SPECIFICATIONS. SHALL NOT EXCEED 2% PER ADA STANDARDS. RUNNING SLOPES ARE DESIGNED TO A MAXIMUM 4.5%.

2024 GREEN  
INFRASTRUCTURE  
UPGRADES  
LINCOLN AVENUE SCHOOL



SMITHGROUP

233 NORTH WATER STREET  
SUITE 502  
MILWAUKEE, WI 53202  
414.615.9570  
www.smithgroup.com



1836 W. Fond Du Lac Ave.  
Milwaukee, WI 53205  
414-622-0103

ISSUED FOR	REV	DATE
100% CD		01/25/2024

SEALS AND SIGNATURES

SITE ADDRESS

SITE # 250  
1817 W. LINCOLN AVENUE  
MILWAUKEE, WI 53215

DRAWING TITLE

GRADING PLAN



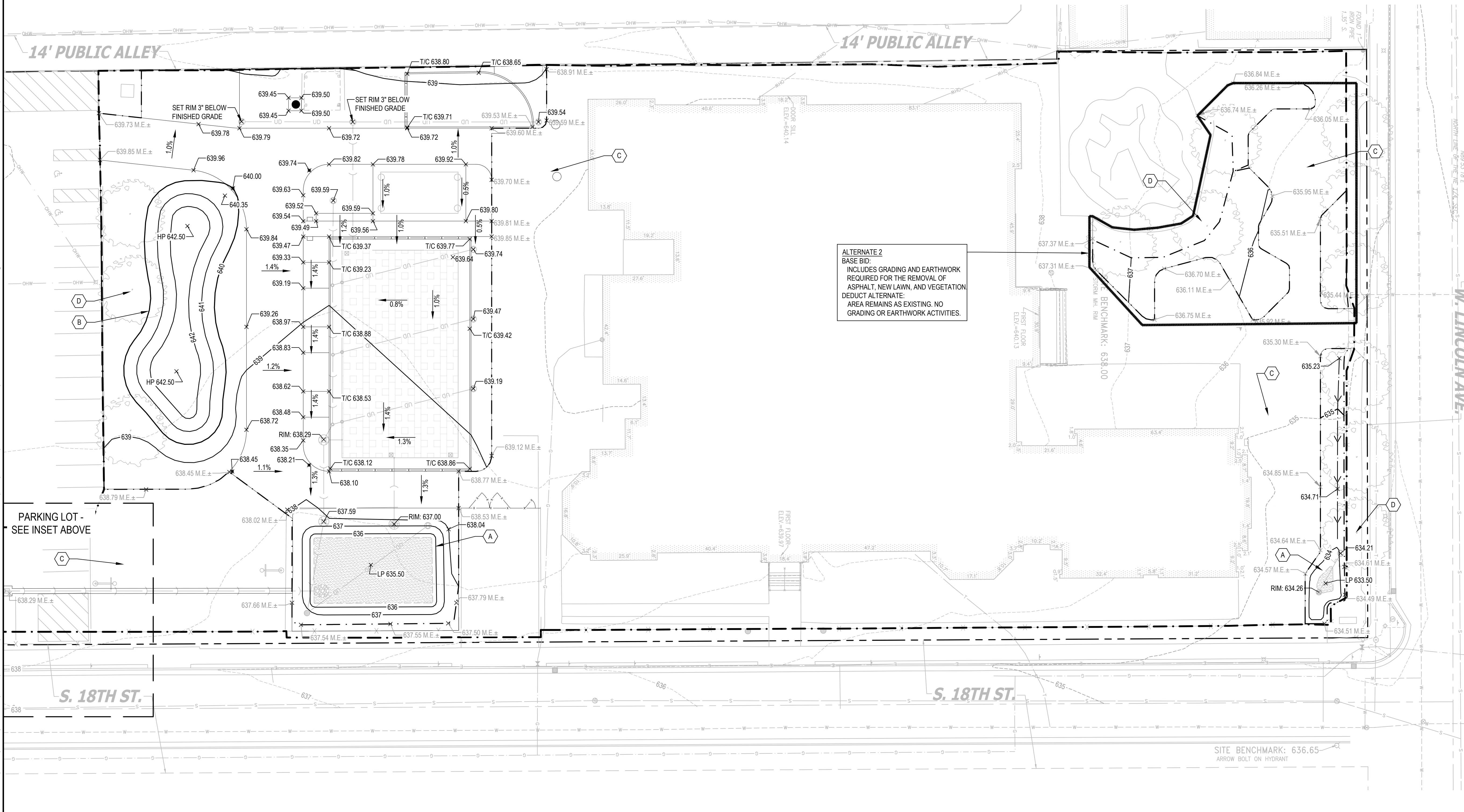
SCALE 14895

PROJECT NUMBER 8319, DIVISION 3

MPS PROJECT NUMBER

CG100

DRAWING NUMBER



ALTERNATE 2  
BASE BID:  
INCLUDES GRADING AND EARTHWORK  
REQUIRED FOR THE REMOVAL OF  
ASPHALT, NEW LAWN, AND VEGETATION  
DEDUCT ALTERNATE:  
AREA REMAINS AS EXISTING. NO  
GRADING OR EARTHWORK ACTIVITIES.







FILE: C:\Users\kkocho\SmithGroup Companies inc\PRJ - 14895 - Consultants\CAD\05 Civil\03 Lincoln Avenue\14895-D3-CP100-SITE PAVE.dwg USER: kkocho DATE: Jan, 25 2024 TIME: 08:55 pm

**LEGEND**

- PANTONE 7683
- PANTONE 802 C
- PANTONE 102C
- PANTONE 804 C
- WHITE

SHEETS MUST BE PRINTED IN COLOR

**KEYED NOTES**

- A** SOCCER FIELD 1 CP500
- B** HALF BASKETBALL COURT. LOCATION OF BASKETBALL MARKINGS SHOULD ALIGN WITH THE EXISTING BASKETBALL HOOP. 1 CP501
- C** PARTIAL HALF BASKETBALL COURT. LOCATION OF BASKETBALL MARKINGS SHOULD ALIGN WITH THE EXISTING BASKETBALL HOOP. 2 CP501
- D** TRAFFIC GARDEN MARKINGS ON ASPHALT, TRAFFIC SYMBOLS AND STRIPE WIDTH ARE STANDARD MPS TEMPLATE
- E** LINE-UP SIGN MARKINGS ON ASPHALT, STANDARD MPS TEMPLATE
- F** TRAFFIC LANES MARKINGS ON ASPHALT, 4" WIDTH STRIPING WITH 2' LENGTH LINE AT 1' INTERVAL
- G** STOP BAR WITH 12" WIDTH STRIPING AT DROP-OFF AREA 1'-6" X 2'-0" RECTANGLES SPACED AT APPROXIMATE 8" APART.
- H** STANDARD MPS TEMPLATE.
- I** 1'-6" DIAMETER SOLID CIRCLES RANDOMLY SPACED AT 2'-0" TO 2'-6" APART, STANDARD MPS TEMPLATE.
- J** SPIN ARROWS. DIAMETER 2.5', STANDARD MPS TEMPLATE.
- K** LEAF JUMP AGILITY PATH MARKINGS 3 CP501
- L** DIMENSION JUMP AGILITY PATH MARKINGS 4 CP501
- M** RECTANGLE JUMP AGILITY PATH MARKINGS 5 CP501
- N** CIRCLE JUMP AGILITY PATH MARKINGS 6 CP501
- O** RECTANGLE CIRCULATION AGILITY PATH MARKINGS 7 CP501
- P** COMPASS MARKING ON ASPHALT, STANDARD MPS TEMPLATE
- Q** FOUR SQUARE MARKINGS ON ASPHALT, STANDARD MPS TEMPLATE
- R** MIRROR ME MARKINGS ON ASPHALT, STANDARD MPS TEMPLATE
- S** HOPSCOTCH MARKINGS ON ASPHALT, STANDARD MPS TEMPLATE
- T** SNAIL HOPSCOTCH 1-34 MARKINGS ON ASPHALT, STANDARD MPS TEMPLATE
- U** CROSSWALK. WHITE 8" WIDTH CROSSWALK STRIPING AT 7" INTERVAL. YELLOW 4" WIDTH CROSSWALK BORDER AT TWO SIDES.
- V** TRAFFIC ARROW MARKING.
- W** RAILROAD CROSSING MARKING ON ASPHALT. STANDARD MPS TEMPLATE.

**SHEET NOTES**

1. REFERENCE SPECIFICATIONS FOR COLOR AND APPLICATION INFORMATION.
2. PAINTED TEXT TO BE 18" IN HEIGHT UNLESS OTHERWISE INDICATED.
3. ALL STRIPING TO BE 2" WIDE UNLESS OTHERWISE INDICATED.
4. ALL PAVEMENT MARKINGS ARE PER MPS STANDARD TEMPLATES UNLESS OTHERWISE INDICATED.
5. PREP SURFACE. REFER TO SITE PREPARATION AND EROSION CONTROL PLANS, SHEET CE 100.
6. A COPY OF MPS'S STANDARD LINE AND GAME STRIPING DETAILS IS AVAILABLE UPON REQUEST FROM THE DIVISION OF FACILITIES AND MAINTENANCE SERVICES. (414) 283-4600

**2024 GREEN INFRASTRUCTURE UPGRADES LINCOLN AVENUE SCHOOL**

Owner:  


**SMITHGROUP**

233 NORTH WATER STREET  
 SUITE 502  
 MILWAUKEE, WI 53202  
 414.615.9570  
 www.smithgroup.com

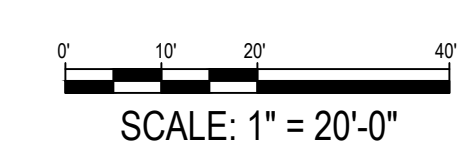
  
 1836 W. Fond Du Lac Ave.  
 Milwaukee, WI 53205  
 414-622-0103

ISSUED FOR	REV	DATE
100% CD		01/25/2024

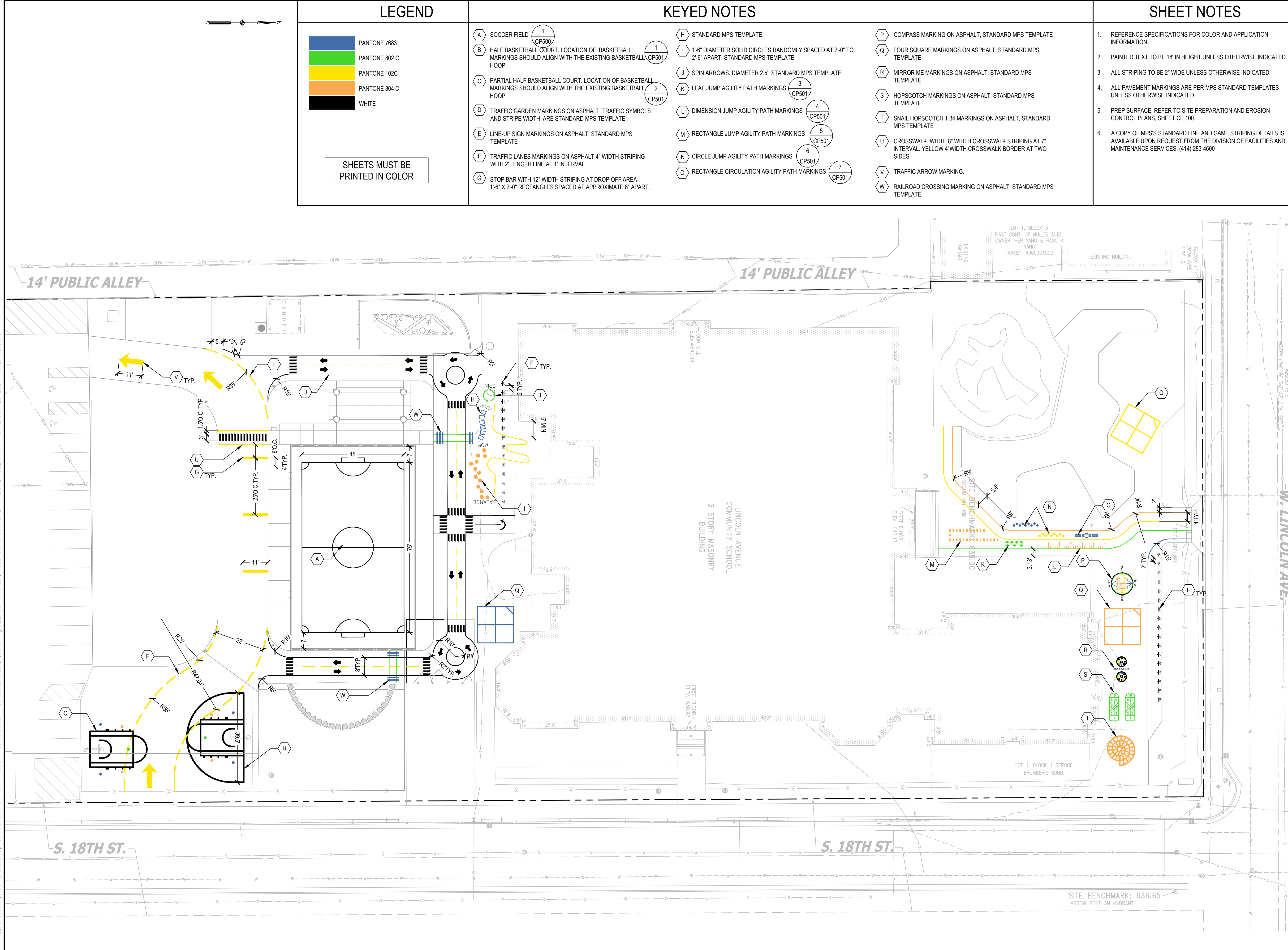
SEALS AND SIGNATURES

SITE ADDRESS  
 SITE # 250  
 1817 W. LINCOLN AVENUE  
 MILWAUKEE, WI 53215

DRAWING TITLE  
**PAVEMENT MARKINGS PLAN**



SCALE 14895  
 PROJECT NUMBER 8319, DIVISION 3  
 MPS PROJECT NUMBER  
**CP100**  
 DRAWING NUMBER





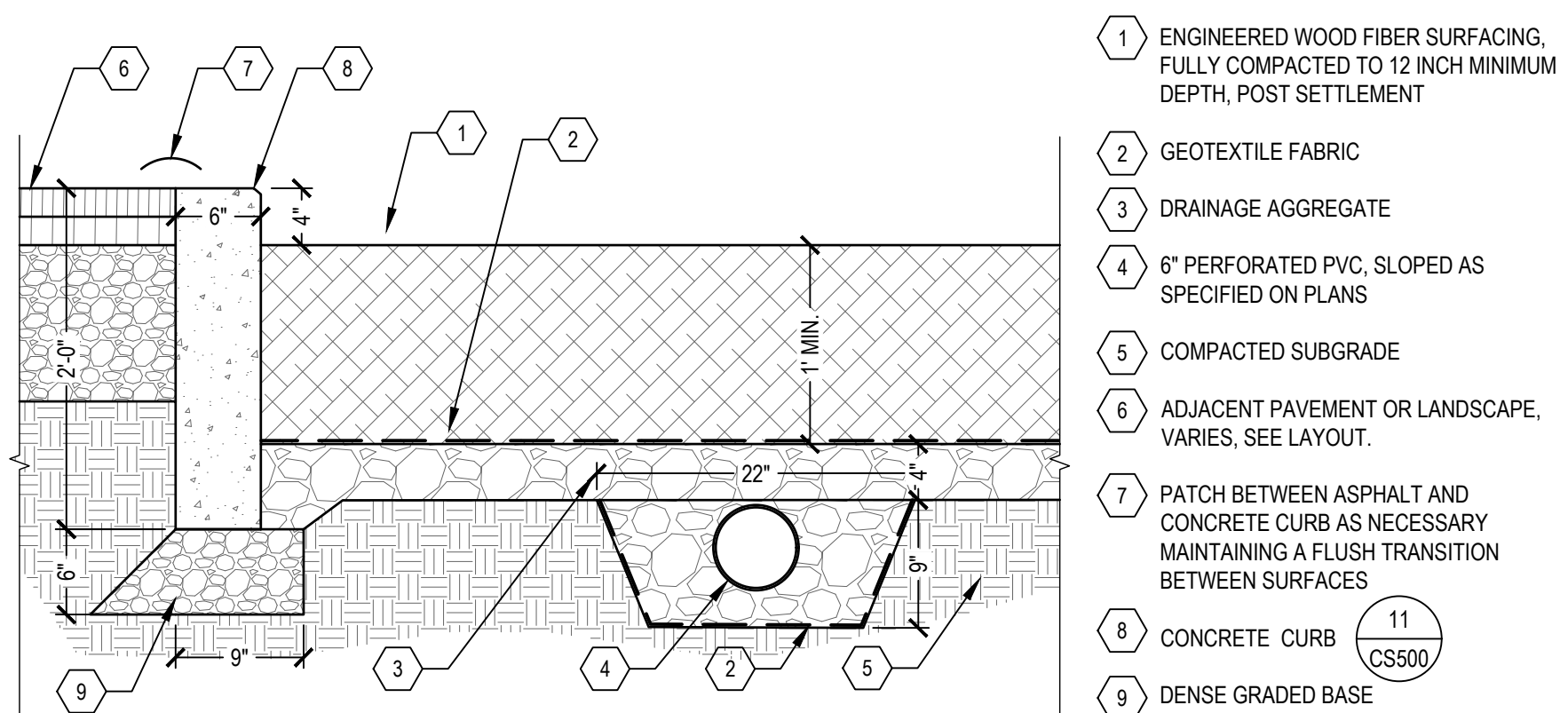




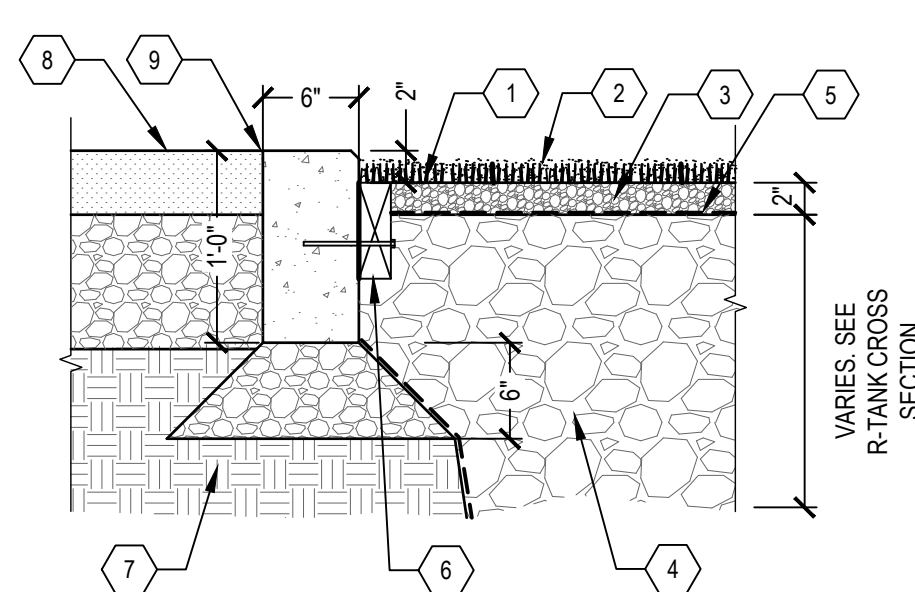




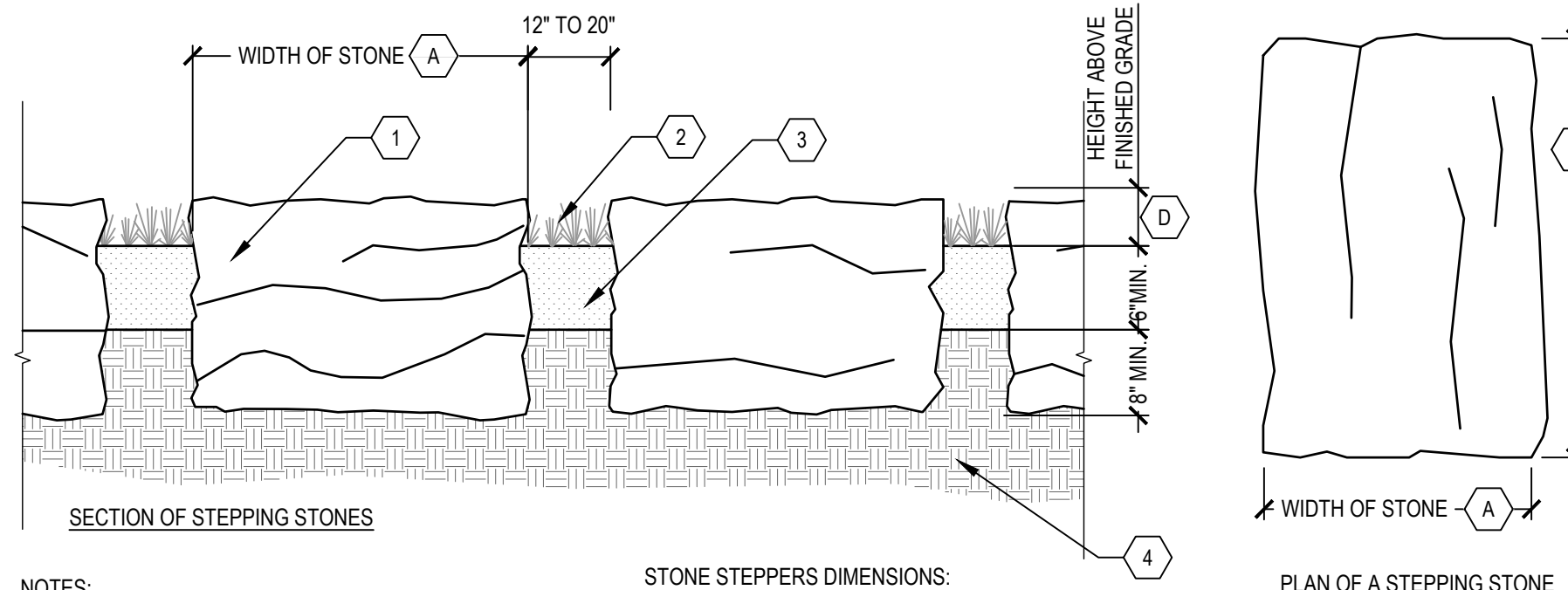
FILE:C:\Users\kkocho\SmithGroup Companies Inc\PRJ - 14895 - Consultants\05 Civil\03\_Lincoln Avenue\14895-03-CS500.dwg USER:kkocho DATE:Jan, 23 2024 TIME: 08:56 pm



- 1 ENGINEERED WOOD FIBER SURFACING, FULLY COMPACTED TO 12 INCH MINIMUM DEPTH, POST SETTLEMENT
- 2 GEOTEXTILE FABRIC
- 3 DRAINAGE AGGREGATE
- 4 6" PERFORATED PVC, SLOPED AS SPECIFIED ON PLANS
- 5 COMPACTED SUBGRADE
- 6 ADJACENT PAVEMENT OR LANDSCAPE, VARIES, SEE LAYOUT.
- 7 PATCH BETWEEN ASPHALT AND CONCRETE CURB AS NECESSARY MAINTAINING A FLUSH TRANSITION BETWEEN SURFACES
- 8 CONCRETE CURB (11) CS500
- 9 DENSE GRADED BASE



- 1 SYNTHETIC TURF
- 2 2" TURF INFILL MATERIAL
- 3 CHOKER STONE
- 4 DRAINAGE AGGREGATE
- 5 GEOTEXTILE FABRIC, TYPE DF
- 6 2 X 6 NAILER BOARD FASTENED WITH 3/8" X 6" BOLT EMBEDDED AND EPOXY GLUED MIN. 2 1/2" INTO CURB, SPACED 3'-0" O.C. HORIZONTALLY
- 7 COMPACTED SUBGRADE
- 8 ADJACENT PAVEMENT OR LAWN, VARIES, SEE PLAN
- 9 CONCRETE CURB (11) CS500

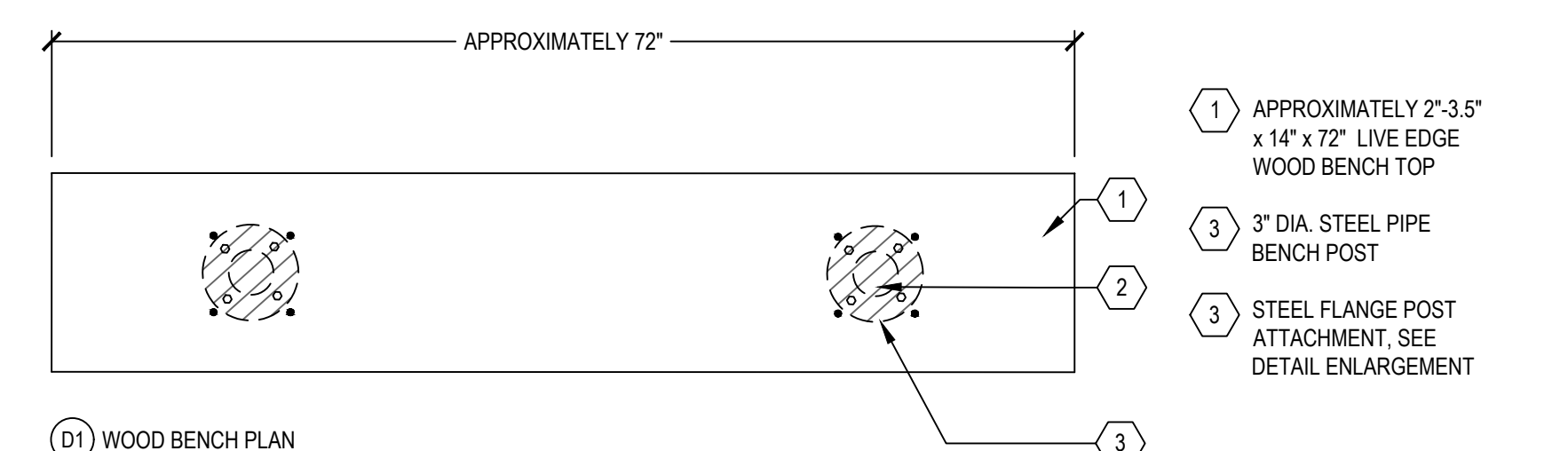


- SECTION OF STEPPING STONES**
- STONE STEPPERS DIMENSIONS:**
- A WIDTH OF STONE - 18" TO 24"
  - B LENGTH OF STONE - 24" TO 30"
  - C HEIGHT OF STONE - 18" TO 24" HEIGHT
  - D HEIGHT ABOVE FINISHED GRADE - 2" TO 4"
- PLAN OF A STEPPING STONE**
- 1 STEPPING STONES
  - 2 ADJACENT PLANTINGS, SEE PLANTING PLAN
  - 3 BIOSWALE SOIL, SEE PLANTING DETAILS.
  - 4 COMPACTED SUBGRADE BELOW STEPPING STONES
- NOTES:**
- PLACE STEPPING STONES TO CONFIGURATIONS AND LOCATION AS SHOWN ON PLAN.
  - SELECT AND PLACE STEPPING STONES SO THAT A MINIMUM OF EXCAVATION SCARS ARE VISIBLE. STEPPING STONES TO BE APPROVED BY OWNER'S PROJECT REPRESENTATIVE PRIOR TO PLACEMENT.
  - DO NOT FRACTURE STEPPING STONES DURING PLACEMENT, SUCH ACTION WILL BE CAUSE FOR REJECTION.
  - WASH OFF STEPPING STONES COMPLETELY AFTER PLACEMENT.
- WHEN PLACED ON A SLOPE, THE TOP OF THE STONE SHOULD BE LEVEL. MAINTAIN THE MINIMUM HEIGHT OF 2" ABOVE FINISHED GRADE AT THE STONE'S HIGHER POINT.

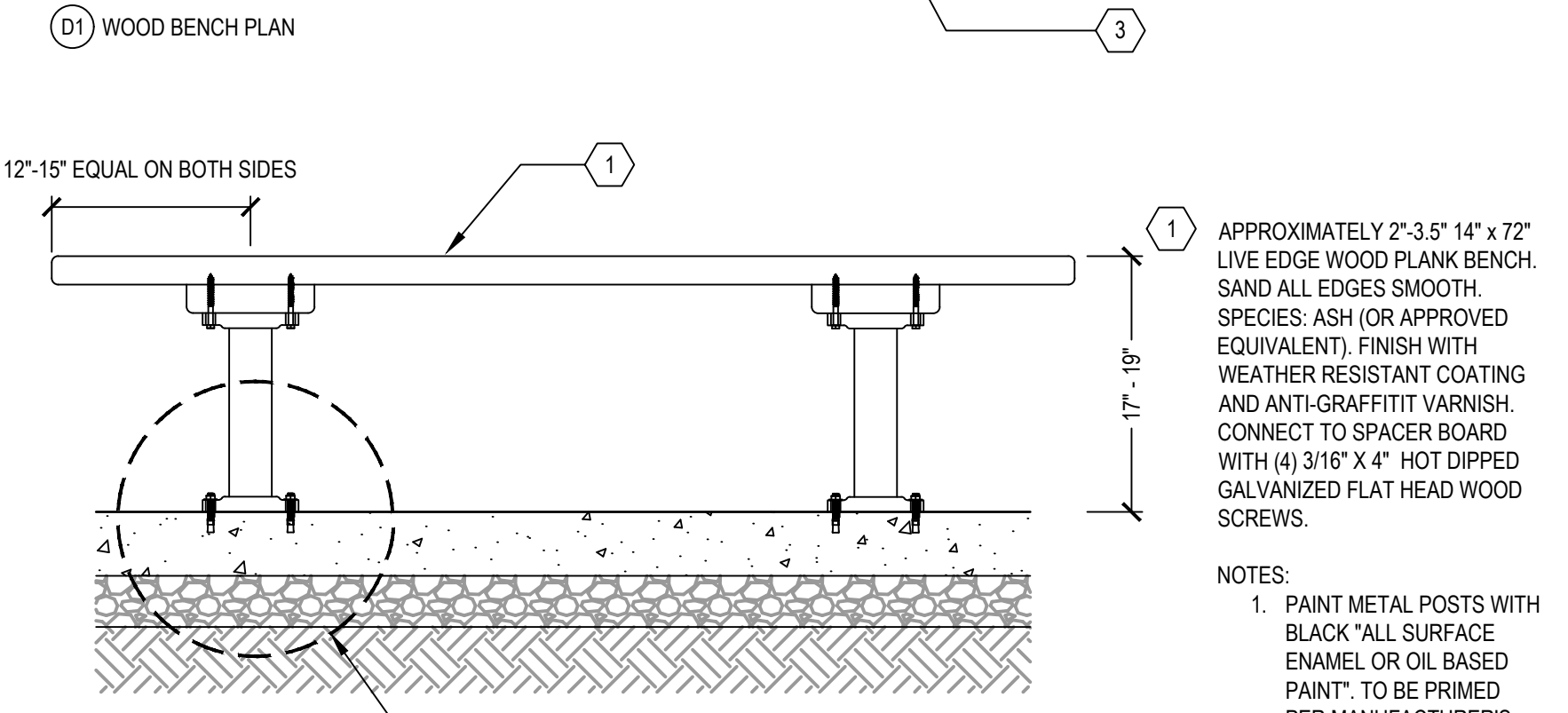
1 FLUSH CURB AT ENGINEERED WOOD FIBER AREA SCALE: 1" = 1'

2 FLUSH CURB AT SYNTHETIC TURF SCALE: 1" = 1'

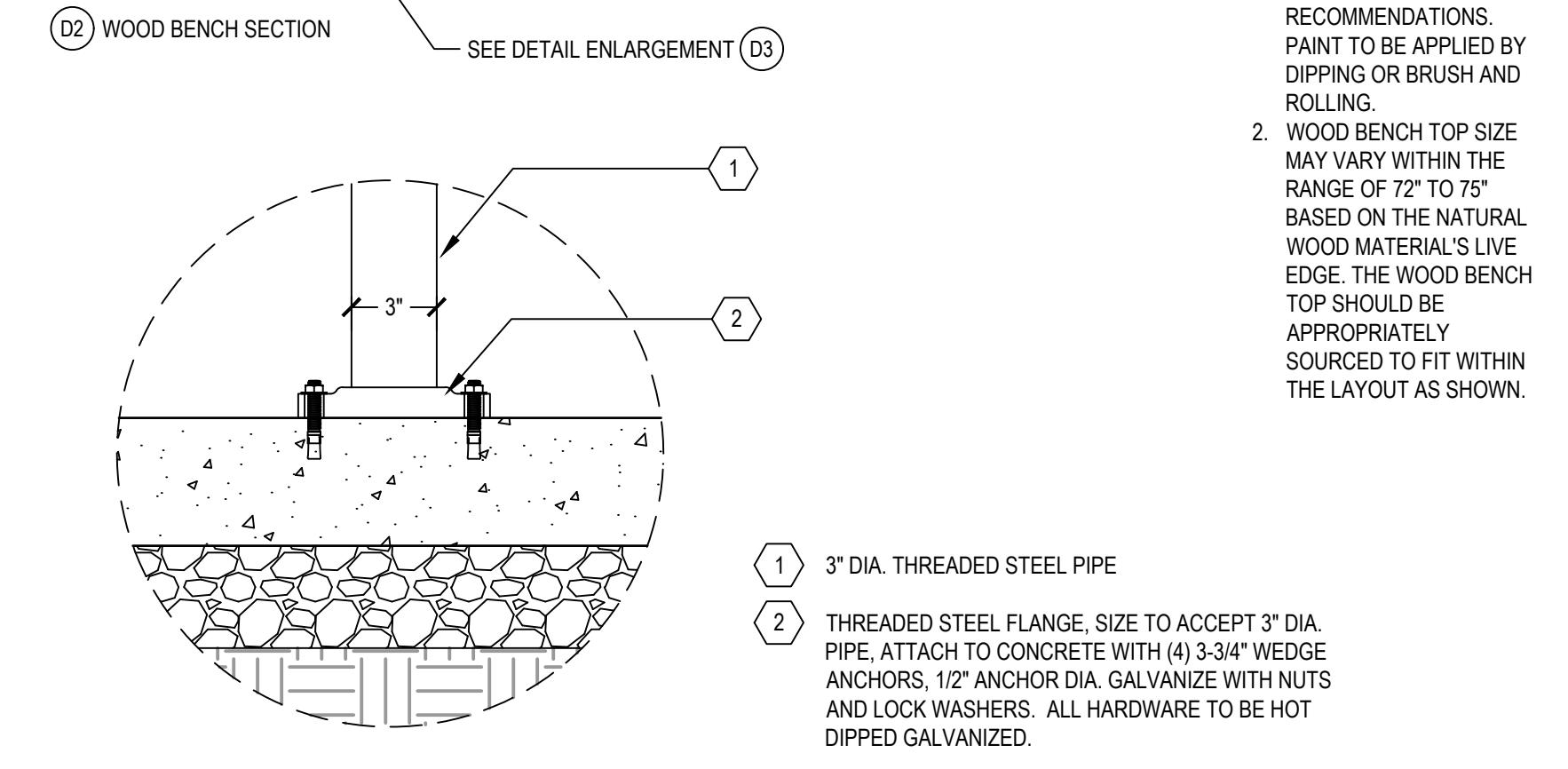
3 STEPPING STONES SCALE: 1" = 1'



- 1 APPROXIMATELY 2'-3.5" x 14" x 72" LIVE EDGE WOOD BENCH TOP
- 2 3" DIA. STEEL PIPE BENCH POST
- 3 STEEL FLANGE POST ATTACHMENT, SEE DETAIL ENLARGEMENT

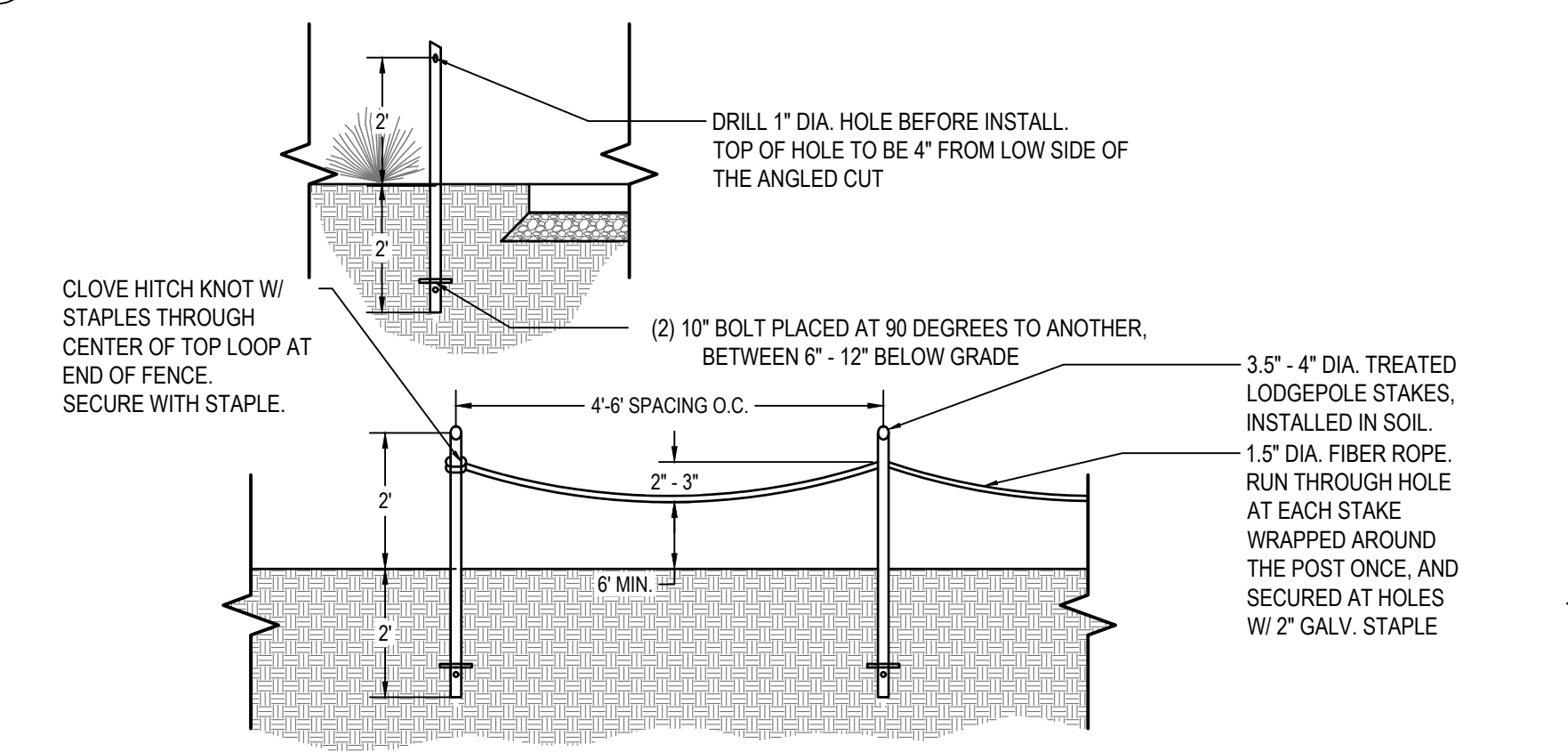


- 1 APPROXIMATELY 2'-3.5" x 14" x 72" LIVE EDGE WOOD PLANK BENCH. SAND ALL EDGES SMOOTH. SPECIES: ASH (OR APPROVED EQUIVALENT). FINISH WITH WEATHER RESISTANT COATING AND ANTI-GRAFFITI VARNISH. CONNECT TO SPACER BOARD WITH (4) 3/16" X 4" HOT DIPPED GALVANIZED FLAT HEAD WOOD SCREWS.
- NOTES:**
- PAINT METAL POSTS WITH BLACK 'ALL SURFACE ENAMEL OR OIL BASED PAINT'. TO BE PRIMED PER MANUFACTURER'S RECOMMENDATIONS. PAINT TO BE APPLIED BY DIPPING OR BRUSH AND ROLLING.
  - WOOD BENCH TOP SIZE MAY VARY WITHIN THE RANGE OF 72" TO 75" BASED ON THE NATURAL WOOD MATERIAL'S LIVE EDGE. THE WOOD BENCH TOP SHOULD BE APPROPRIATELY SOURCED TO FIT WITHIN THE LAYOUT AS SHOWN.



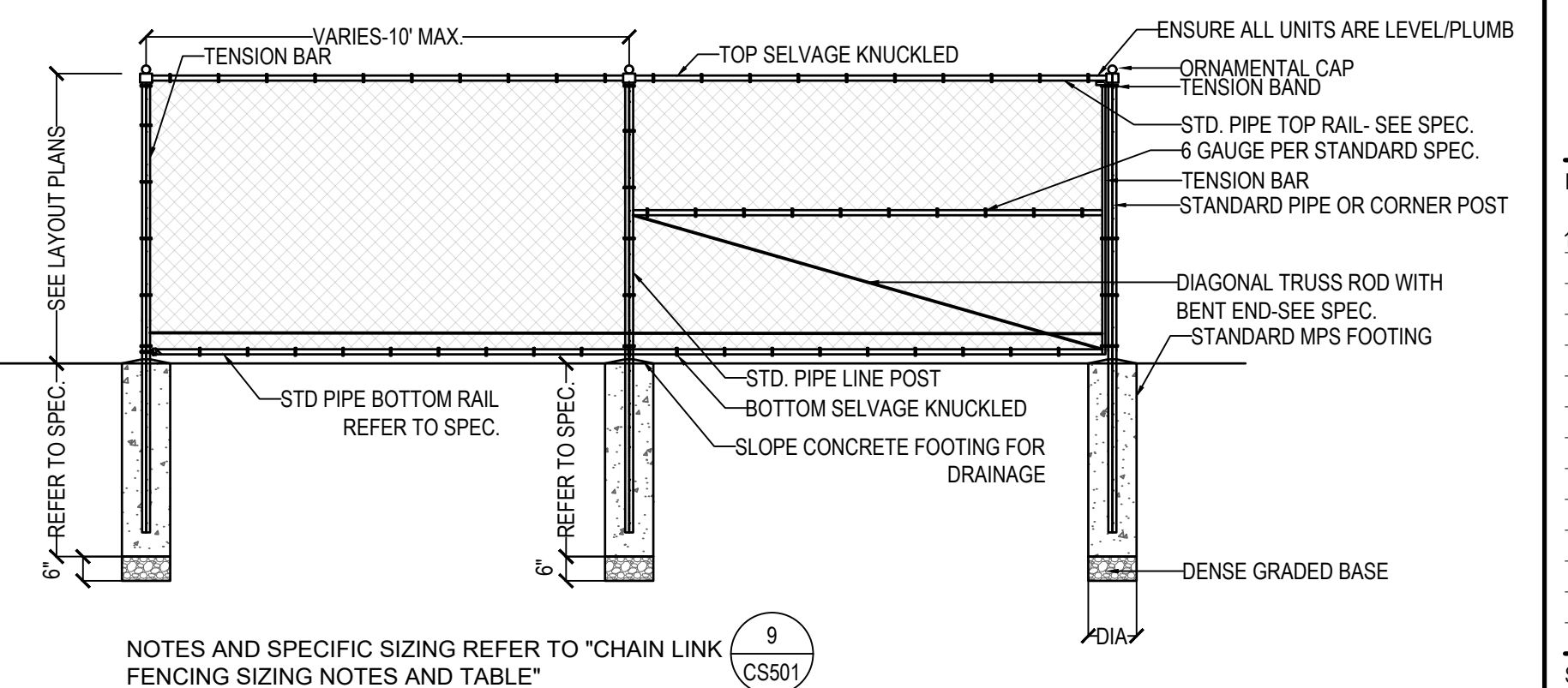
- 1 3" DIA. THREADED STEEL PIPE
- 2 THREADED STEEL FLANGE. SIZE TO ACCEPT 3" DIA. PIPE. ATTACH TO CONCRETE WITH (4) 3-3/4" WEDGE ANCHORS, 1/2" ANCHOR DIA. GALVANIZE WITH NUTS AND LOCK WASHERS. ALL HARDWARE TO BE HOT DIPPED GALVANIZED.

4 WOOD BENCH (MPS STANDARD DETAILS) SCALE: 1" = 1'



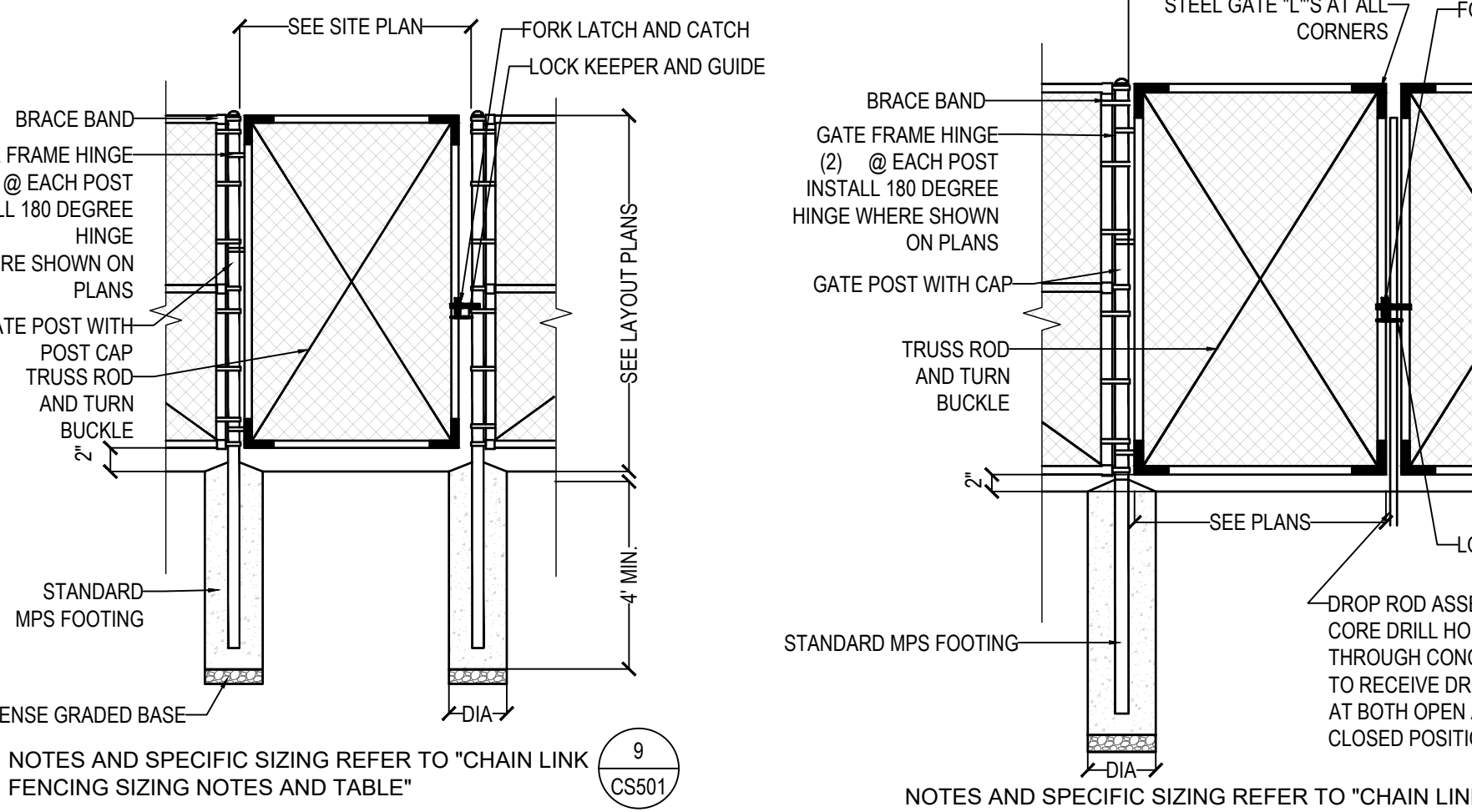
- GENERAL NOTES:**
- CUT TOP OF POLE AT A 30 DEGREE ANGLE. THE ANGLED SIDE IS TO FACE THE ACTIVE AREA.
  - SAND TOP OF EACH POLE AFTER INSTALL TO REMOVE ANY SPLINTERS.
  - ROPE TO COME WITHIN 3" OF GROUND IF STEPPED ON.

5 LOW ROPE FENCE (MPS STANDARD DETAIL) NOT TO SCALE



- NOTES AND SPECIFIC SIZING REFER TO "CHAIN LINK FENCING SIZING NOTES AND TABLE"

6 6' HEIGHT CHAIN LINK FENCE (MPS STANDARD DETAILS) NOT TO SCALE



- NOTES AND SPECIFIC SIZING REFER TO "CHAIN LINK FENCING SIZING NOTES AND TABLE"

7 6' HEIGHT CHAIN LINK PEDESTRIAN GATE (MPS STANDARD DETAILS) NOT TO SCALE

CHAINLINK FENCE SIZING				
POST TYPE	HEIGHT (')	POST DIA.(")	FOOT DEPTH MIN. (')	FOOT DIA. MIN. (")*
LINE	< 4'	0'-2"	4'-0"	0'-10"
LINE	4' - 14'	0'-2 1/2"	4'-0"	0'-10"
LINE	> 14'	3'-0"	6'-0"	1'-0"
END	< 4'	0'-2 1/2"	4'-0"	0'-10"
END	4' - 12'	0'-3"	4'-0"	1'-0"
END	> 12'	0'-4"	6'-0"	1'-0"
GATE	4' - 6'	0'-3"	6'-0"	1'-0"
GATE	7' - 12'	0'-4"	6'-0"	1'-0"
GATE	> 12'	0'-6"	8'-0"	1'-2"

- \*FOOTING DEPTH\* IS INCLUSIVE OF 6" OF STONE AT BOTTOM OF HOLE. POST EMBEDMENT TO BE 6" LESS THAN DIMENSION SHOWN.
- GENERAL NOTES:**
- COORDINATE LAYOUT AND INSTALLATION WITH CONCRETE WORK. LOCATE FENCE POSTS AT CONCRETE SCORE JOINTS AS SHOWN ON PLANS WHERE APPLICABLE.
  - SUBMIT SHOP DRAWINGS FOR FENCE AS SPECIFIED
  - SEE SPECIFICATIONS FOR FENCE FOOTING REQUIREMENTS
  - FINAL DEPTH OF FOOTING NOT TO BE LESS THAN 4" OF CONCRETE
  - SLOPE TOP OF FOOTINGS 1-2% PITCHING AWAY FROM POSTS
- \*REVIEW AGAINST FIELD CONDITIONS AND CONFIRM W/ OWNER DURING SHOP DRAWING REVIEW

8 6' HEIGHT CHAIN LINK VEHICLE DOUBLE GATE (MPS STANDARD DETAILS) NOT TO SCALE

9 CHAIN LINK FENCE SIZING TABLE AND NOTES

# 2024 GREEN INFRASTRUCTURE UPGRADES LINCOLN AVENUE SCHOOL



## SMITHGROUP

233 NORTH WATER STREET  
SUITE 502  
MILWAUKEE, WI 53202  
414.615.9570  
www.smithgroup.com



1836 W. Fond Du Lac Ave.  
Milwaukee, WI 53205  
414-622-0103

ISSUED FOR	REV	DATE
100% CD		01/25/2024

SEALS AND SIGNATURES

SITE ADDRESS  
SITE # 250  
1817 W. LINCOLN AVENUE  
MILWAUKEE, WI 53215

DRAWING TITLE  
SITE DETAILS

SCALE  
PROJECT NUMBER  
MPS PROJECT NUMBER  
DRAWING NUMBER

14895  
8319, DIVISION 3  
CS501



























2024 GREEN  
INFRASTRUCTURE  
UPGRADES  
LINCOLN AVENUE SCHOOL



**SMITHGROUP**

233 NORTH WATER STREET  
SUITE 502  
MILWAUKEE, WI 53202  
414.615.9570  
www.smithgroup.com



1836 W. Fond Du Lac Ave.  
Milwaukee, WI 53205  
414-622-0103

ISSUED FOR	REV	DATE
100% CD		01/25/2024

SEALS AND SIGNATURES

SITE ADDRESS

SITE # 250  
1817 W. LINCOLN AVENUE  
MILWAUKEE, WI 53215

DRAWING TITLE

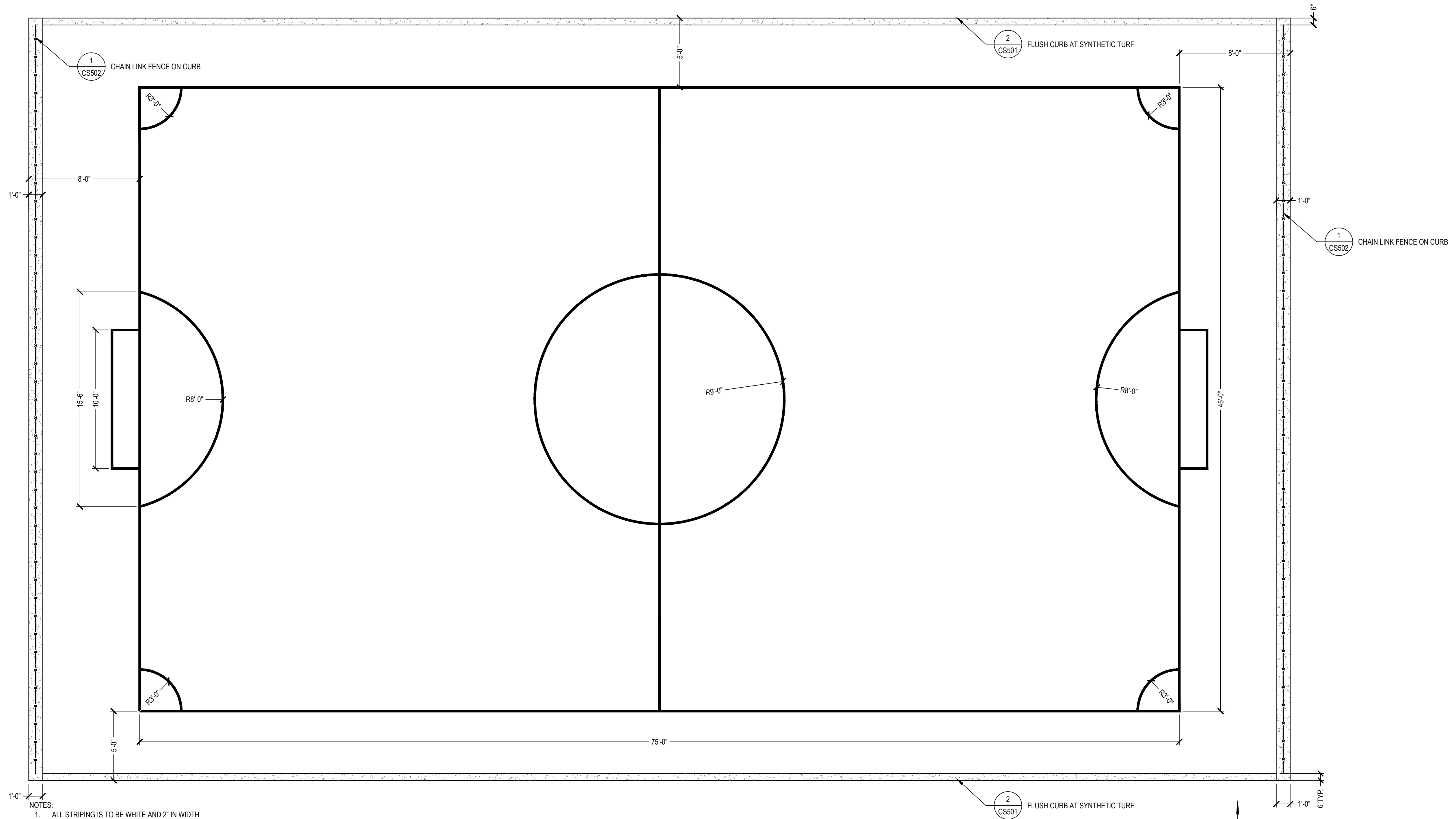
PAVEMENT MARKING DETAILS

SCALE 14895

PROJECT NUMBER 8319, DIVISION 3

MPS PROJECT NUMBER **CP500**

DRAWING NUMBER



- NOTES:
1. ALL STRIPING IS TO BE WHITE AND 2" IN WIDTH
  2. DIMENSIONS ARE TO THE CENTERLINE OF THE STRIPE

1 SOCCER FIELD

SCALE: 1/4"=1'-0"

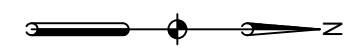
FILE: C:\Users\kwoch\SmithGroup Companies Inc\PRJ - 4895 - Consultants\CAD\05 Civil\03 Lincoln Avenue\14895-D3-CP100-SITE PAVE.dwg USER: kwoch DATE: Jan, 25 2024 TIME: 08:57 pm







FILE: G:\shortcut-targets-by-id\0h2g2c8m1c\_rq\X05Png\7g66Ba1\Project Folders\23-186 Smithgroup MPS Schools\DWG\03\_Lincoln Avenue\14895-D3-L300-PLANTING.dwg USER:ncgro DATE: Jan, 25 2024 TIME: 09:34 am

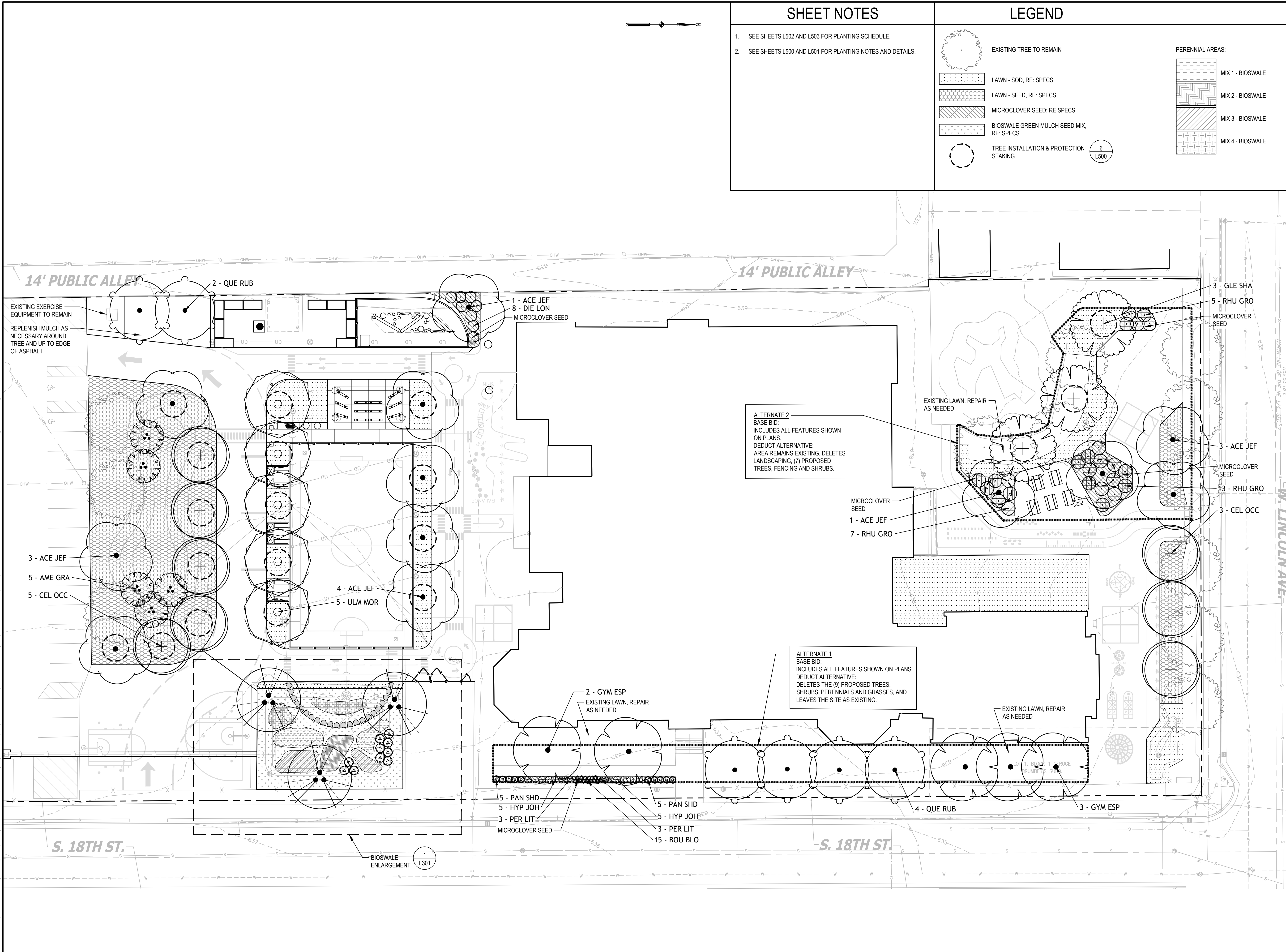


### SHEET NOTES

- SEE SHEETS L502 AND L503 FOR PLANTING SCHEDULE.
- SEE SHEETS L500 AND L501 FOR PLANTING NOTES AND DETAILS.

### LEGEND

	EXISTING TREE TO REMAIN		PERENNIAL AREAS:
	LAWN - SOD, RE: SPECS		MIX 1 - BIOSWALE
	LAWN - SEED, RE: SPECS		MIX 2 - BIOSWALE
	MICROCLOVER SEED: RE SPECS		MIX 3 - BIOSWALE
	BIOSWALE GREEN MULCH SEED MIX, RE: SPECS		MIX 4 - BIOSWALE
	TREE INSTALLATION & PROTECTION STAKING		6 L500



# 2024 GREEN INFRASTRUCTURE UPGRADES LINCOLN AVENUE SCHOOL



## SMITHGROUP

233 NORTH WATER STREET  
 SUITE 502  
 MILWAUKEE, WI 53202  
 414.615.9570  
 www.smithgroup.com



1836 W. Fond Du Lac Ave.  
 Milwaukee, WI 53205  
 414-622-0103

ISSUED FOR	REV	DATE
100% CD		01/25/2024

SEALS AND SIGNATURES

SITE ADDRESS

SITE # 250  
 1817 W. LINCOLN AVENUE  
 MILWAUKEE, WI 53215

DRAWING TITLE

PLANTING PLAN

SCALE: 1" = 20'-0"

SCALE 14895

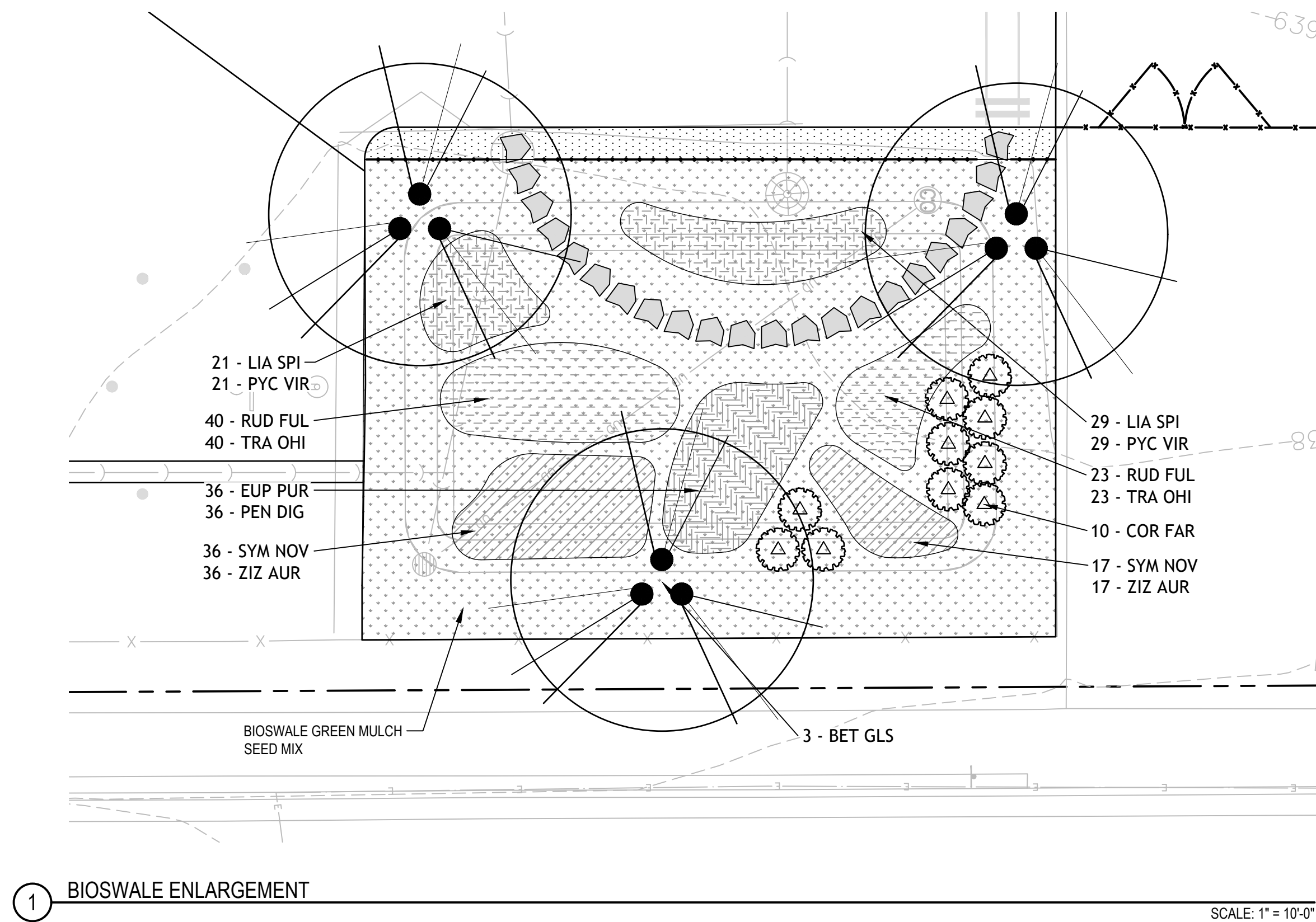
PROJECT NUMBER 8319, DIVISION 3

MPS PROJECT NUMBER L300

DRAWING NUMBER



FILE: G:\shortcut-targets-by-id\0h2g2c8mhc\_rq\X05PngZig6Baf\Project Folders\23-188 Smithgroup MPS Schools\DWG\03\_Lincoln Avenue\14895-D3-L300-PLANTING.dwg USER:ncgro DATE: Jan, 25 2024 TIME: 09:34 am



**LEGEND**

- EXISTING TREE TO REMAIN
- LAWN - SOD, RE: SPECS
- LAWN - SEED, RE: SPECS
- MICROCLOVER SEED, RE: SPECS
- BIOSWALE GREEN MULCH SEED MIX, RE: SPECS
- TREE INSTALLATION & PROTECTION STAKING

- PERENNIAL AREAS:
- MIX 1 - BIOSWALE
  - MIX 2 - BIOSWALE
  - MIX 3 - BIOSWALE
  - MIX 4 - BIOSWALE

**SHEET NOTES**

1. SEE SHEETS L502 AND L503 FOR PLANTING SCHEDULE.
2. SEE SHEETS L500 AND L501 FOR PLANTING NOTES AND DETAILS.

**2024 GREEN INFRASTRUCTURE UPGRADES**  
LINCOLN AVENUE SCHOOL



**SMITHGROUP**

233 NORTH WATER STREET  
SUITE 502  
MILWAUKEE, WI 53202  
414.615.9570  
www.smithgroup.com



1836 W. Fond Du Lac Ave.  
Milwaukee, WI 53205  
414-622-0103

ISSUED FOR	REV	DATE
100% CD		01/25/2024

SEALS AND SIGNATURES

SITE ADDRESS

SITE # 250  
1817 W. LINCOLN AVENUE  
MILWAUKEE, WI 53215

DRAWING TITLE

**PLANTING PLAN ENLARGEMENTS**

SCALE 14895

PROJECT NUMBER 8319, DIVISION 3

MPS PROJECT NUMBER

**L301**

DRAWING NUMBER















